



 2
Bedrooms

 1
Bathroom

 2
Receptions

SAMUEL
MAKEPEACE
BESPOKE
ESTATE AGENTS



- READY MADE INVESTMENT OPPORTUNITY
- FOR SALE WITH TENANT IN SITU
- TWO BEDROOM TERRACED PROPERTY
- TWO RECEPTION ROOMS
- FULLY FITTED KITCHEN
- SPACIOUS GROUND FLOOR BATHROOM
- COURTYARD TO THE REAR
- NO UPWARD CHAIN!



Ready to take on a solid investment? "Hit me with your best shot – fire away!" This two-bedroom terraced property on Shotsfield Place, Milton, is primed for buy-to-let investors looking for a hassle-free opportunity. With a reliable tenant already in situ and no upward chain, it's generating income from day one. Inside, you'll find two spacious reception rooms, a fitted kitchen, and a ground floor bathroom. Outside, the rear courtyard offers gated access and easy upkeep. Whether you're building your portfolio or firing off your first shot, this property is ready to deliver. Just CONTACT SAMUEL MAKEPEACE BESPOKE ESTATE AGENTS TO ARRANGE YOUR VIEWING.

Room Details

INTERIOR

Ground Floor

Dining Room - Double glazed door to the front aspect. Laminate wood flooring. Radiator.

Lounge - Double glazed window. Radiator.

Kitchen - Double glazed window and exit door to the rear. A fitted kitchen with a range of wall and base units, a sink and drainer, work surfaces and tiled splashbacks. Built under cook with gas hob and cookerhood above. Space for a washing machine, a tumble dryer and a fridge freezer. Tiled flooring and radiator.

Bathroom - Double glazed window. Low level WC, wash hand basin and bath with shower over. Partly tiled walls and tiled flooring. Extractor fan and towel warming radiator.

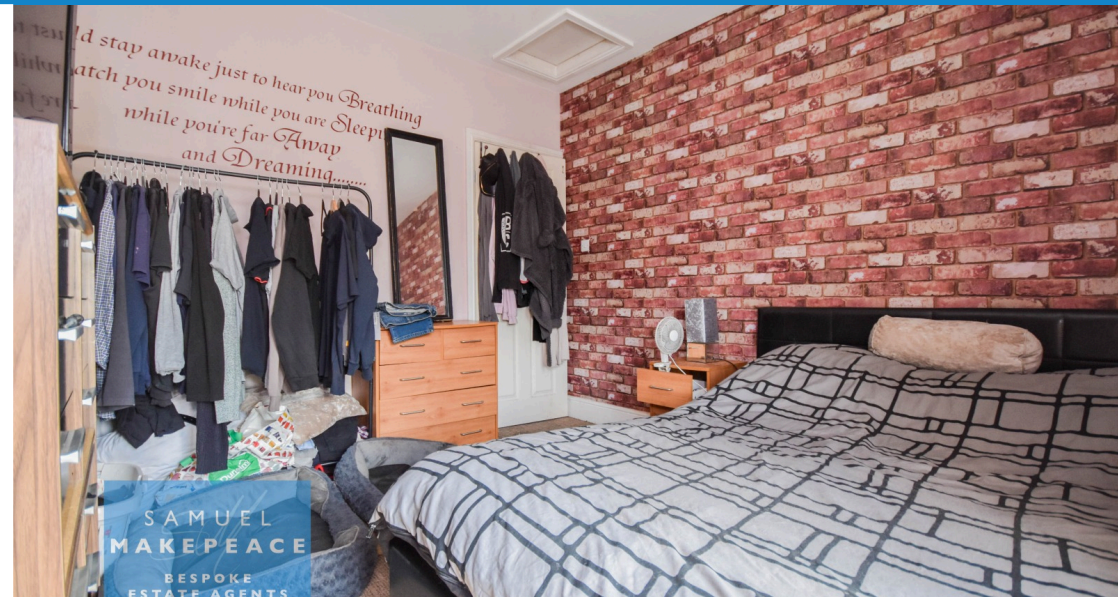
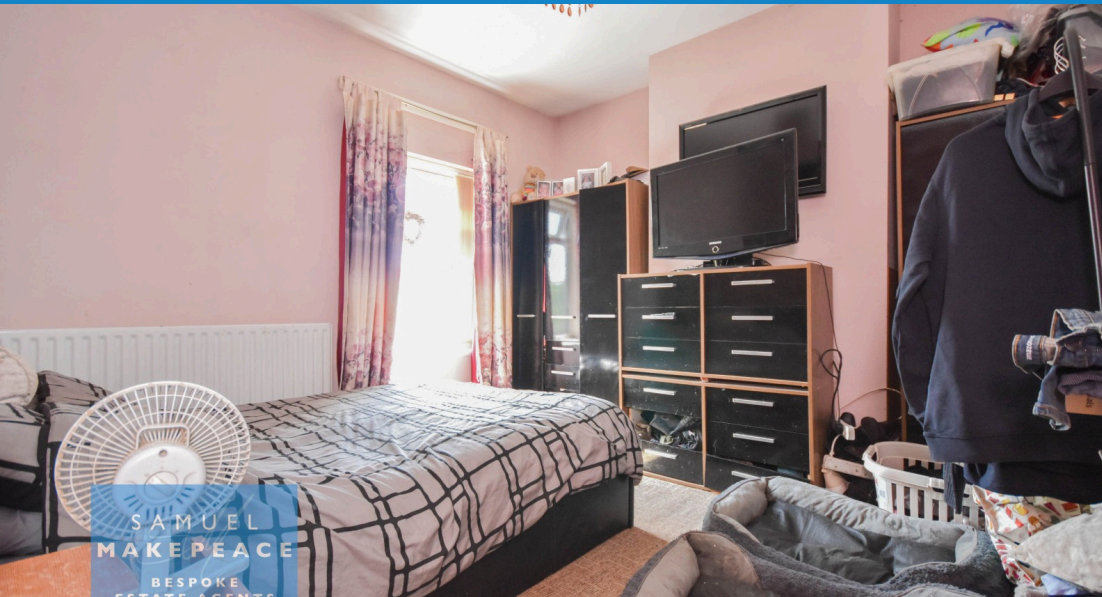
First Floor

Bedroom One - Double glazed window. Radiator.

Bedroom Two - Double glazed window. Radiator.

EXTERIOR

Rear - Paved patio area with gated access.





Scan me for more info

