



2

Bedrooms



1

Bathroom

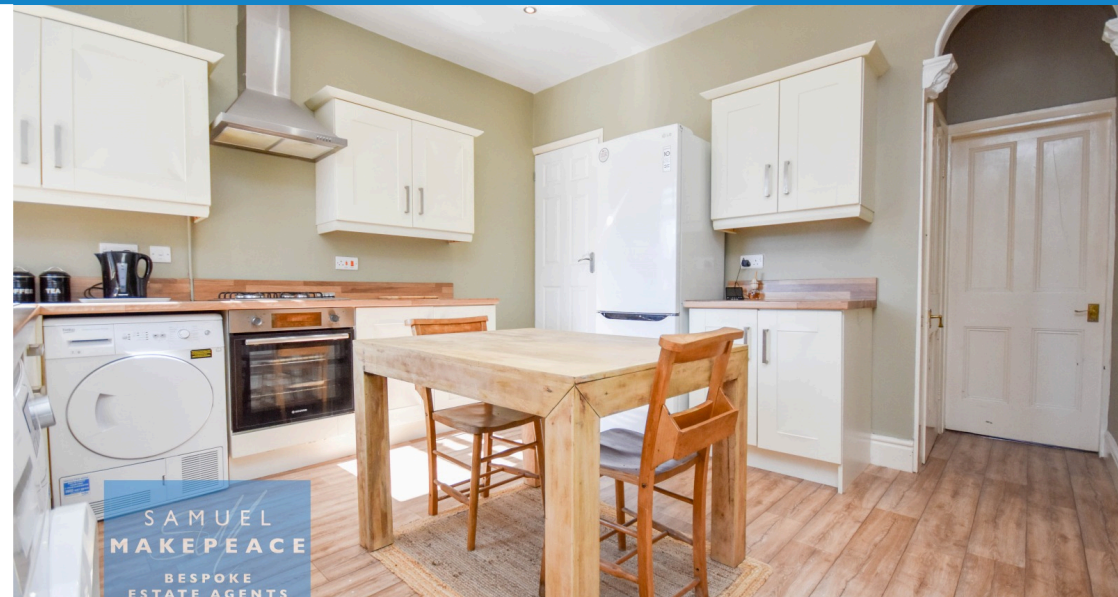
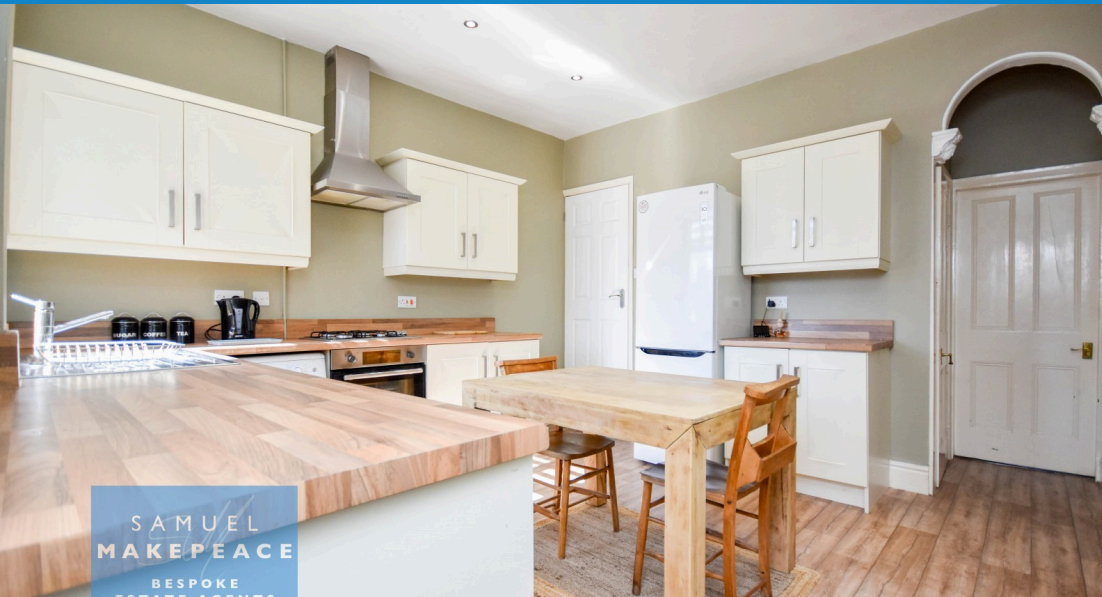


1

Reception

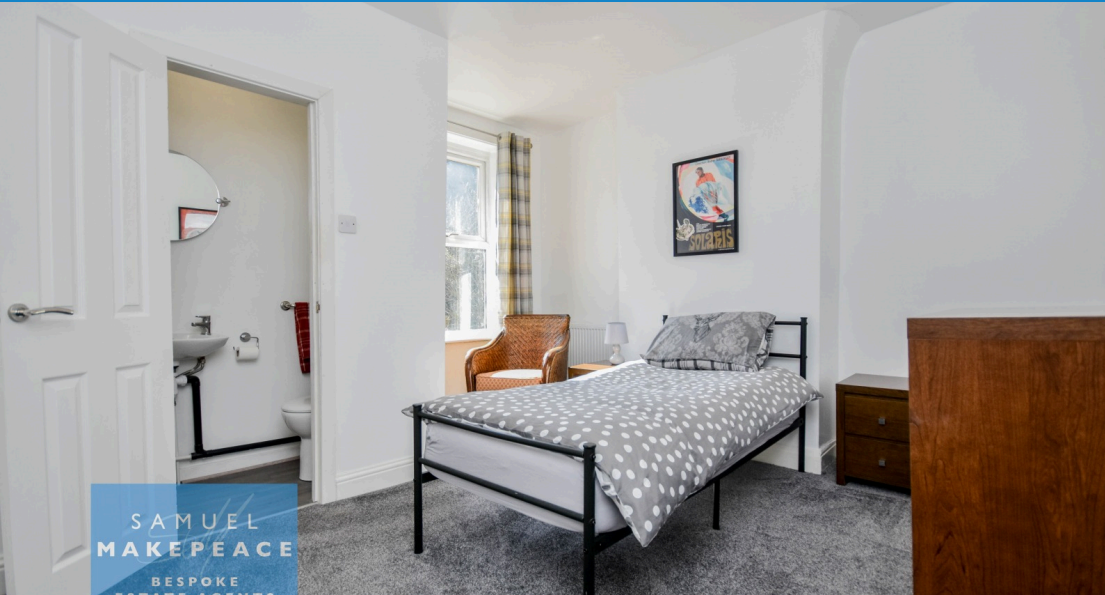


- LOVELY TWO BED TERRACED HOUSE
- SPACIOUS LOUNGE WITH BAY WINDOW
- COTTAGE FEEL KITCHEN / DINER
- GROUND FLOOR BATHROOM with BATH & OVERHEAD SHOWER
- TWO GREAT SIZED BEDROOMS
- BEDROOM with ENSUITE WC
- FORE-COURT FRONT GARDEN
- NO UPWARD CHAIN
- WALKING DISTANCE TO LOCAL AMENITIES, TRAVEL ROUTES AND SCHOOLS



HOW WOULD YOU LIKE TO FEEL LIKE THE KING OR QUEEN WITH YOUR NEW HOME....WELL WE HAVE THE PROPERTY FOR YOU, TAKE A LOOK AT THIS LOVELY TWO BED TERRACED HOUSE SITUATED ON QUEEN STREET, IN THE SOUGHT-AFTER AREA OF KIDSGROVE. Step inside and you are greeted with the SPACIOUS LOUNGE with a bay window, leading into the KITCHEN / DINER with a cupboard space for extra storage and plenty of space for appliances. Finally, the ground floor holds the BATHROOM which has a bath and overhead shower to suit everyone's preference. Leading up the stairs you are greeted with TWO GREAT SIZED BEDROOMS, one of which has a WC for convenience. Externally, there is a FORE-COURT FRONT and the REAR GARDEN which is low maintenance with a paved patio area and gated rear access. Another added bonus to this property is that there is NO UPWARD CHAIN! SO WHY WAIT AROUND.

CALL SAMUEL MAKEPEACE BESPOKE ESTATE AGENTS TODAY!





| Energy Efficiency Rating | | |
|---|---------|-------------------------|
| | Current | Potential |
| Very energy efficient - lower running costs | | |
| (92+) A | | |
| (81-91) B | | |
| (69-80) C | | 80 |
| (55-68) D | | |
| (39-54) E | 47 | |
| (21-38) F | | |
| (1-20) G | | |
| Not energy efficient - higher running costs | | |
| England, Scotland & Wales | | EU Directive 2002/91/EC |

Address: Kidsgrove, ST7

Scan me for more info

