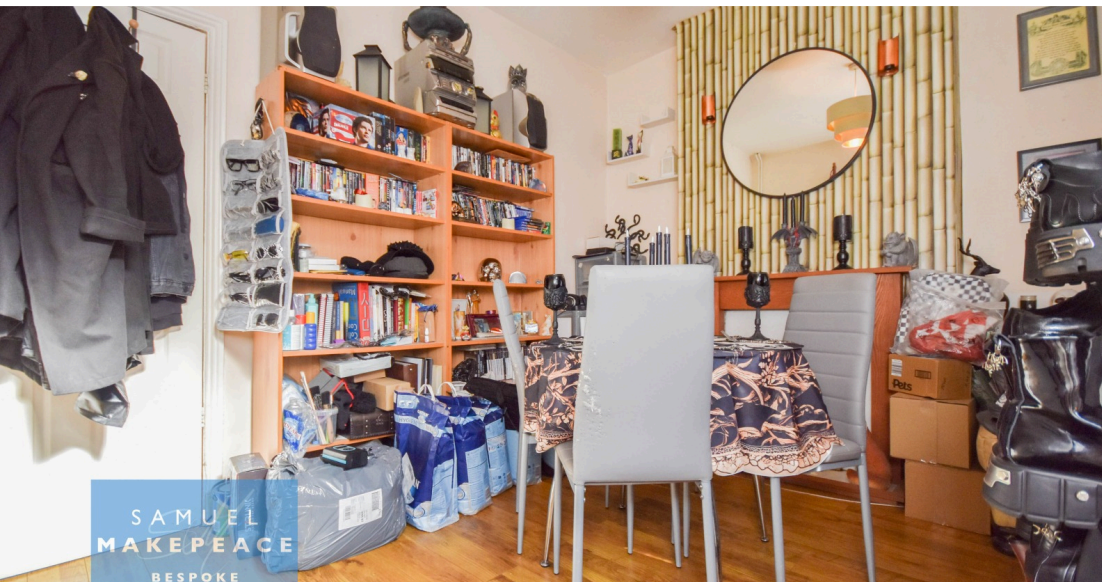
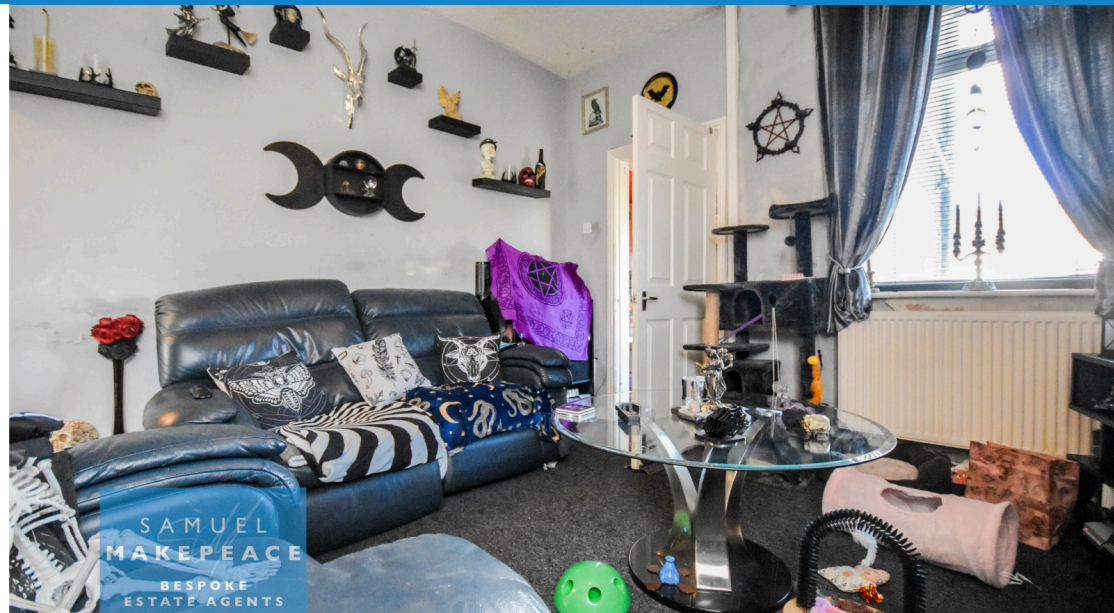
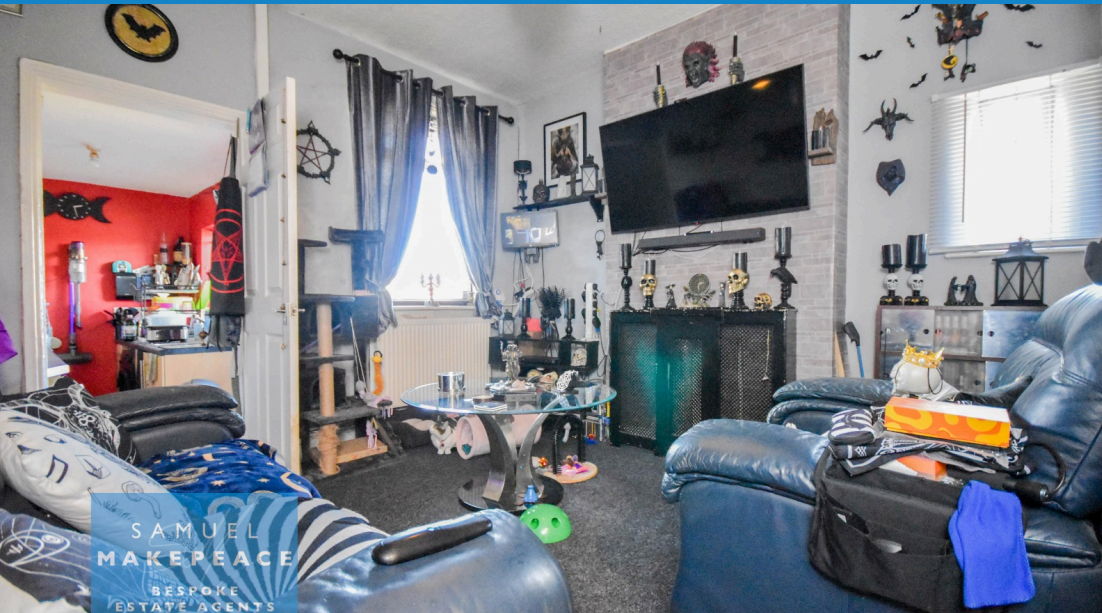




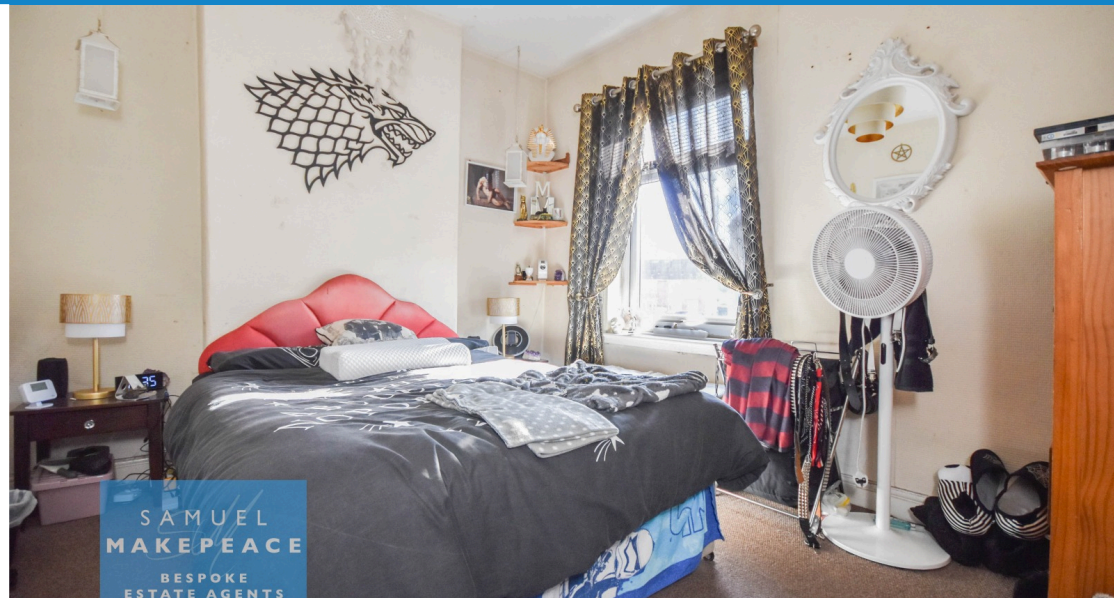
 1
Bedroom

 2
Bathrooms

 2
Receptions



- END TERRACE HOME
- TWO LARGE RECEPTION ROOMS
- FITTED KITCHEN with NEAUTRAL CUPBOARDS
- TWO DOUBLE BEDROOMS TO THE FIRST FLOOR
- FIRST FLOOR BATHROOM with BATH TUB
- LOW MAINTENANCE REAR COURTYARD
- DOUBLE GLAZED THROUGHOUT
- NO UPWARD CHAIN
- CONTACT SAMUEL MAKEPEACE TODAY



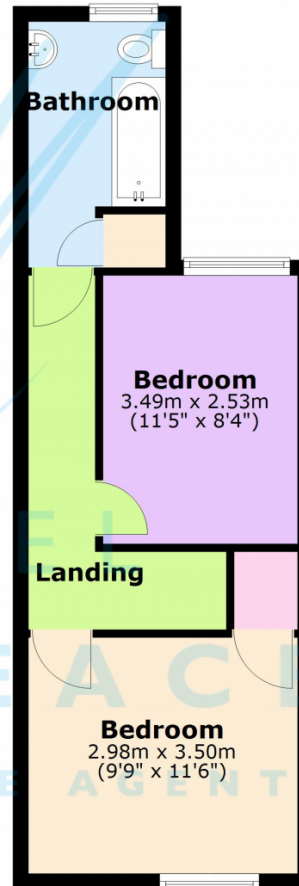
ATTENTION INVESTORS - A fantastic opportunity has arisen to purchase a TWO BEDROOM TERRACED property situated in a popular part of BURSLEM! The property offers the perfect location, ideal for walking into the TOWN CENTRE flourishing with eateries, shops and a grand theatre. Offered with a CHAIN FREE SALE this one is great! Step inside and you will find the first of TWO RECEPTION ROOMS, plenty of space and laminate wood flooring in here. Either reception room are living room or dining room depending on which way you would like! Following through is the NEUTRAL FITTED KITCHEN. Up the stairs, TWO BEDROOMS AWAIT with space aplenty. Unlike your usual terrace, this property has an upstairs BATHROOM, complete with bath and overhead shower. To the exterior, is a LOW MAINTENANCE rear patio! IF THIS SOUNDS LIKE SOMETHING YOU ARE INTERESTED IN CONTACT SAMUEL MAKEPEACE TODAY!



Ground Floor



First Floor



Energy Efficiency Rating		
	Current	Potential
Very energy efficient - lower running costs		
(92+) A		81
(81-91) B		
(69-80) C		
(55-68) D		
(39-54) E	57	
(21-38) F		
(1-20) G		
Not energy efficient - higher running costs		
England, Scotland & Wales		EU Directive 2002/91/EC

Address: 11 Stellar Street, ST6

Scan me for more info

