




 **4**
Bedrooms

 **2**
Bathrooms

 **2**
Receptions

SAMUEL
MAKEPEACE
BESPOKE ESTATE AGENTS



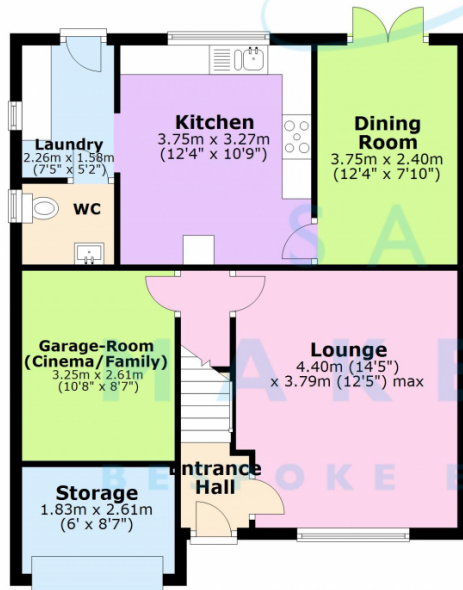
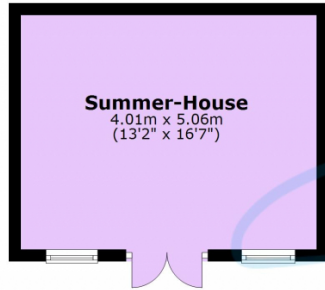
- **SPACIOUS LOUNGE** with large window and archway leading to the dining room
- **GORGEOUS DINING ROOM** with patio doors leading to the garden
- **MODERN FITTED KITCHEN** with ample cupboard and worktop space
- **CONVENIENT LAUNDRY ROOM** and **DOWNSTAIRS WC**
- **FOUR AMAZING SIZED BEDROOMS** all boasting fitted wardrobes
- **MASTER BEDROOM** complete with **ENSUITE** featuring tiled shower and vanity unit
- **WELL KEPT FAMILY BATHROOM**
- **STUNNING LOW MAINTENANCE, ENCLOSED GARDEN** with decked patio and **IMPRESSIVE SUMMERHOUSE OUTBUILDING/MANCAVE**
- **DRIVEWAY FOR MULTIPLE VEHICLES**



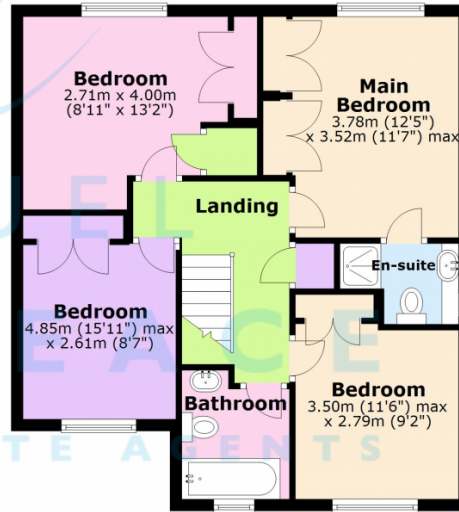
The treasure hunt is over...we have found you a true gem! If you've been searching for the perfect family home, look no further - this stunning four bedroom detached property on the highly sought-after Sapphire Drive, Milton is the hidden treasure you've been waiting for! Offering spacious living, modern finishes, an incredible outside space, this home is a real gem inside and out! The gorgeous home provides a brilliant first impression, with the large driveway providing ample parking for multiple vehicles. Step inside to discover a welcoming entrance hall, which highlights exactly what this home has to offer. From here, you'll discover a cosy yet spacious lounge perfectly set up for those chilled nights at home, whilst flowing seamlessly through an archway into the gorgeous dining room, where patio doors invite the outdoors in. The stylish kitchen complete with sleek finishes and a bespoke design, offers plenty of cupboard and worktop space and even room for an American fridge/freezer - heaven on earth for any home chef! There is also a separate laundry room to keep noisy appliances tucked away and a convenient downstairs WC, because convenience is key! If extra living space is a must, then look no further than the integral garage that this home has to offer. Cleverly it has been partially converted into a versatile snug/additional lounge which can be transformed to suit your needs, while the remaining section provides handy storage. Upstairs, you'll find four generous sized bedrooms, with plenty of space for all the family whilst all boasting fitted wardrobes for extra storage needs. The master bedroom is complete with a stylish ensuite, featuring a tiled shower cubicle and vanity unit, making it the true retreat and escape from reality. Step outside and prepare to be amazed! The decked patio area, artificial grass, sleeper borders, and mature shrubs create a beautiful, low-maintenance space. But the real hidden treasure? The outdoor bar - perfect for entertaining - and the incredible summerhouse, fully kitted out with electric and currently home to a pool table, ready for you to make your own. This beautiful family home really is a rare find, Contact Samuel Makepeace Bespoke Estate Agents Today to make it yours!




Ground Floor



First Floor



Energy Efficiency Rating		
	Current	Potential
Very energy efficient - lower running costs		
(92+) A	<div>59</div>	<div>85</div>
(81-91) B		
(69-80) C		
(55-68) D		
(39-54) E		
(21-38) F		
(1-20) G		
Not energy efficient - higher running costs		
England, Scotland & Wales		EU Directive 2002/91/EC 

Address: 9 Sapphire Drive, ST6

Scan me for more info

