



 **3**
Bedrooms

 **1**
Bathroom

 **2**
Receptions

SAMUEL
MAKEPEACE
BESPOKE ESTATE AGENTS



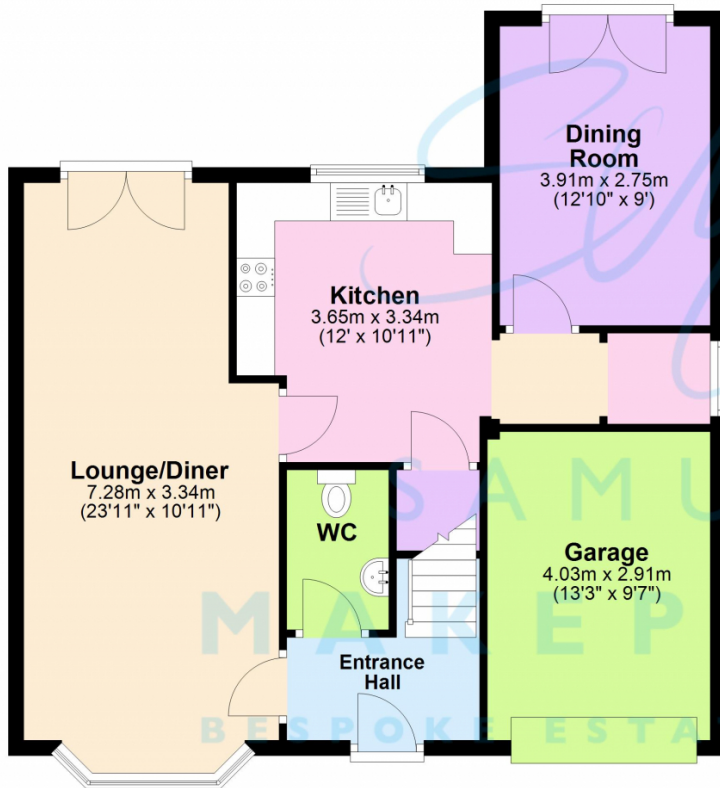
- EXTENDED THREE BEDROOM DETACHED HOUSE FOR SALE
- SOUGHT AFTER LOCATION
- LARGE DUAL ASPECT LOUNGE/DINER
- CONTEMPORARY KITCHEN
- FURTHER RECEPTION ROOM
- DOWNSTAIRS WC
- THREE DOUBLE BEDROOMS
- INTEGRAL GARAGE
- CLOSE TO LOCAL AMENITIES



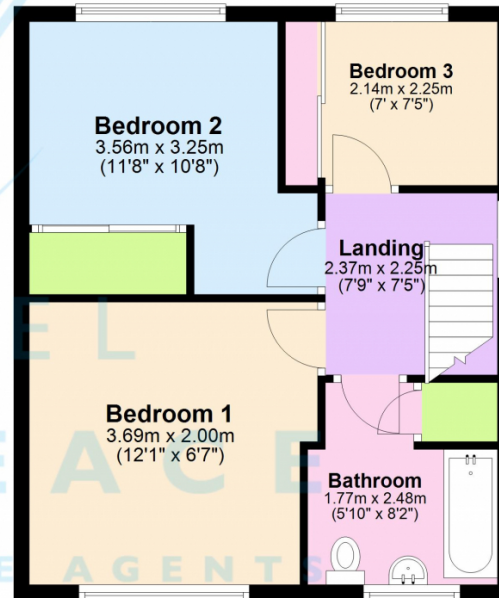
LISTEN UP! I've got a secret for you, let me tell you about ORKNEY AVENUE... better yet, let me show you... Step inside this EXTENDED THREE BEDROOM DETACHED and you are greeted with a welcoming entrance hall, ideal for coats and shoes. Step inside to the LARGE LOUNGE DINER and there is plenty of living space and dining space and double patio doors onto the garden! The Kitchen is next which has plenty of cupboards and worktop space, there is also a handy pantry for that extra storage, and a integral cooker and hob! The family room is the extended space in this property, giving you another room to use, it can serve as a multi purpose room and has double patio doors onto the garden. Next up their is a utility space, currently housing the tumble dryer. Downstairs is finished off with the DOWNSTAIRS WC which is accessed via the entrance hall. Upstairs you will find THREE DOUBLE BEDROOMS with two of which have built in wardrobes. The family bathroom is fully tiled and a decent size, with a handy airing cupboard! Externally the rear has an enclosed garden, with paved patio and lawn. There is access to the front via the side. The front has a gravelled garden, tarmac driveway and access to the garage via electric roller door. Orkney Avenue is located in the popular area of packmoor and is close to local amenities, bus route and commuter routes. It is also a stones throw away from playing fields. If we're ticking most of your boxes with this one, be sure to call SAMUEL MAKEPEACE BESPOKE ESTATE AGENTS TODAY!



Ground Floor
Approx. 75.3 sq. metres (810.1 sq. feet)



First Floor
Approx. 45.0 sq. metres (484.2 sq. feet)



Scan me for more info

