



 **2**
Bedrooms

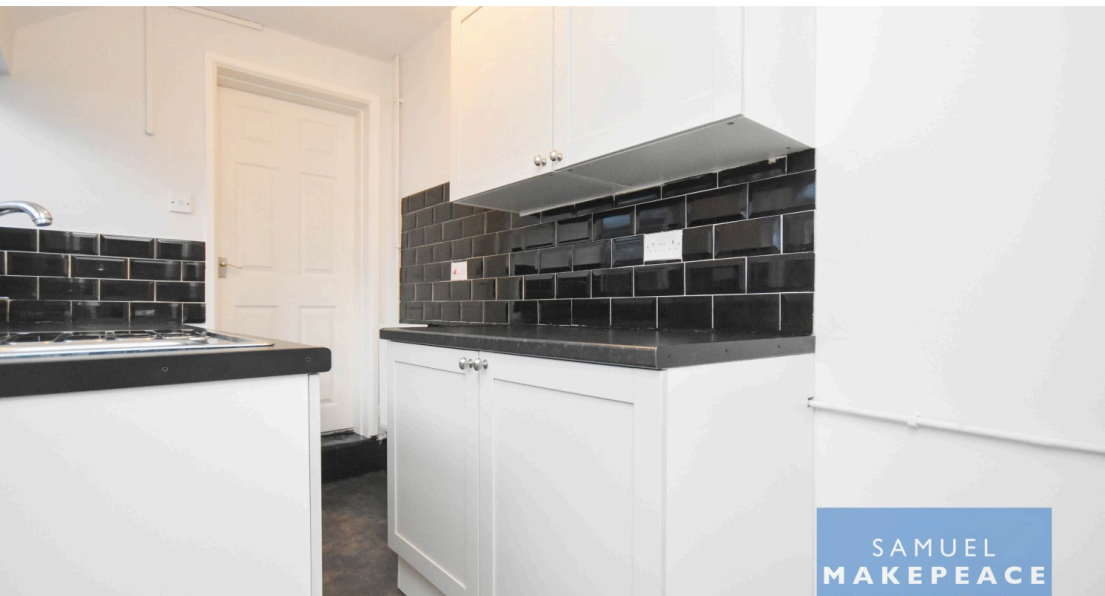
 **1**
Bathroom

 **2**
Receptions

SAMUEL
MAKEPEACE
BESPOKE ESTATE AGENTS



- REFURBISHED TWO BEDROOM TERRACE FOR SALE
- TWO RECEPTION ROOMS
- MODERN FITTED KITCHEN
- CONTEMPRARY BATHROOM
- TWO DOUBLE BEDROOMS
- MAIN BEDROOM WITH STORAGE CUPBOARD
- LOW MAINTENANCE REAR GARDEN
- CLOSE TO LOCAL AMENITIES
- CLOSE TO TOWN CENTRE
- CALL SAMUEL MAKEPEACE ESTATE AGENTS TODAY



What's new pussy cat... WHOA, WHOA, WHOA... We've got a fantastic NEW REFURBISHED property for sale, located on SMITH CHILD STREET ideal for first time buyers or investors alike! Step inside and you are greeted with a lovely lounge, with plenty of space and laminate wood flooring. Into the dining room, there is another large space with plenty of room, laminate floor and also a under stairs storage cupboard. Both the lounge and dining room are interchangeable and can be used as either room to suit your needs. The Kitchen is next, which you will find a galley kitchen, with modern kitchen units with space for all of your appliances. Between the kitchen and bathroom there is a rear hall with access to a large storage cupboard which houses the boiler, there is also the back door off the hall. Downstairs is finished off with the spacious contemporary bathroom, which has been well kept. Upstairs, you will find TWO DOUBLE BEDROOMS, one of which has a storage cupboard which could be used as a wardrobe. Externally the property has a low maintenance rear garden. The property is closely located to all local amenities, and also 5 minutes in the car to the town centre of Tunstall! From an investors point of view, there is a potential yield of around 9%. So if you think this property is the one that you have been looking for... CALL SAMUEL MAKEPEACE BESPOKE ESTATE AGENTS TODAY!

Internal

Ground floor

Lounge - Double glazed front door, double glazed window, laminate wood flooring radiator.

Dining Room - Double glazed window, laminate wood flooring, under stairs storage cupboard, radiator.

Kitchen - Double glazed window, range of wall and base kitchen cupboards, sink and drainer, work tops, tiled splashback, space for cooker, space for washing machine, space for fridge freezer, vinyl tile flooring, radiator.

Rear Hall - Double glazed rear door, storage cupboard.

Bathroom - Double glazed window, bath, LLWC, hand wash basin, vinyl flooring, part tiled walls, normal radiator.

First Floor

Bedroom One - Double glazed window, radiator.

Bedroom Two - Double glazed window, storage cupboard, radiator.

External

Rear Garden - Paved terrace garden, access to outhouse and gated access to rear alley.





Scan me for more info

