



## Whitford Gardens, CR4

**£1,650 PCM**

Newly refurbished four bedroom house comprising one reception, modern fitted kitchen, four double bedrooms, one bathroom and private rear garden.

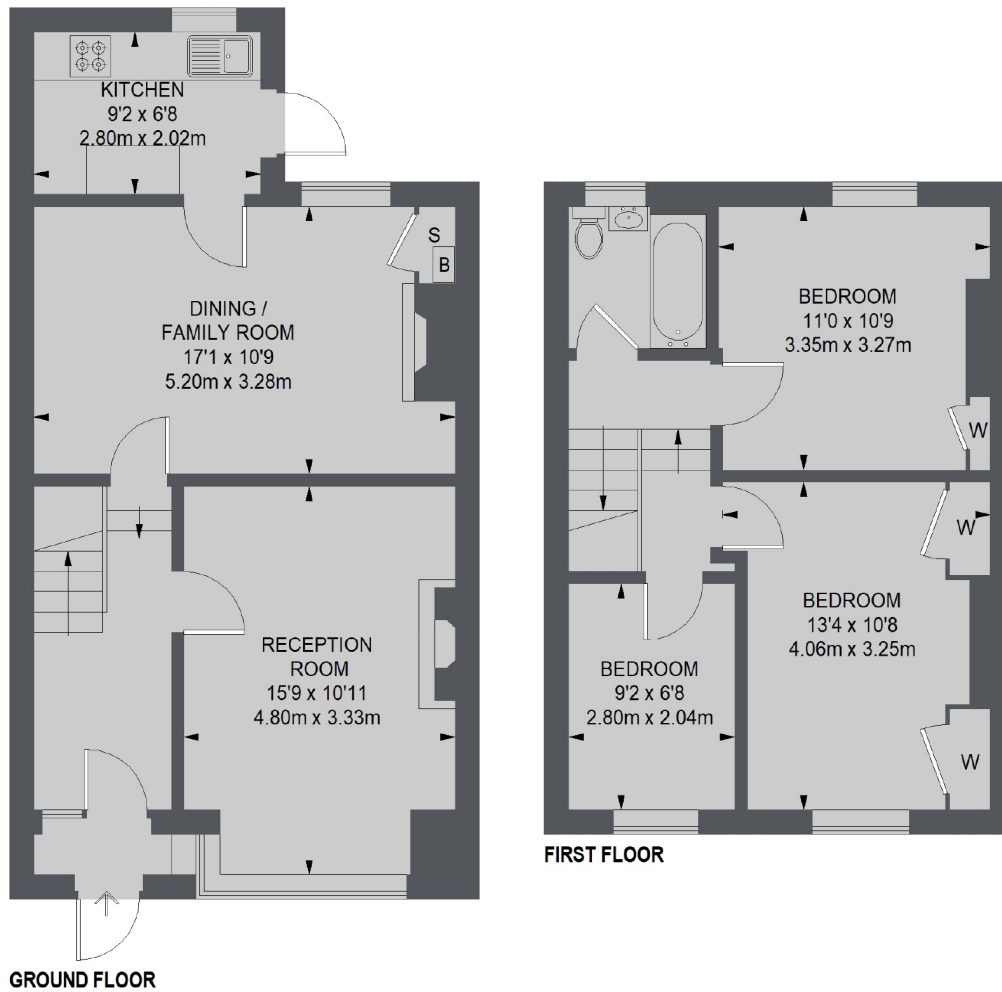
- Four Double Bedrooms
- One Reception
- One Bathroom
- Modern Kitchen
- Newly Refurbished
- Private Rear Garden

For further information on the costs associated with renting a property, please pop into our office or visit our website.



Whitford Gardens is a quiet residential road in the heart of Mitcham located within close proximity to both Mitcham Eastfields and Mitcham Junction train station.





TOTAL APPROX. FLOOR AREA 947 SQ. FT. (88.0 SQ. M.)

Jacksons Tooting  
 26 Tooting Bec Road  
 London  
 SW17 8BD  
 020 8767 0522  
[tooting.lettings@jacksonsestateagents.com](mailto:tooting.lettings@jacksonsestateagents.com)

Energy Rating: We aim to make our particulars both accurate and reliable. However they are not guaranteed; nor do they form part of an offer or contract. If you require clarification on any points then please contact us, especially if you're traveling some distance to view. Please note that appliances and heating systems have not been tested and therefore no warranties can be given as to their good working order.