



TRINITY ROAD, SW17

£475,000

- EPC Rating C
- Tooting Bec

- Close To The Tube
- Approved Planning Permission For A Roof Terrace



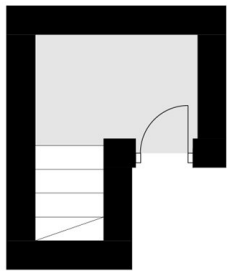
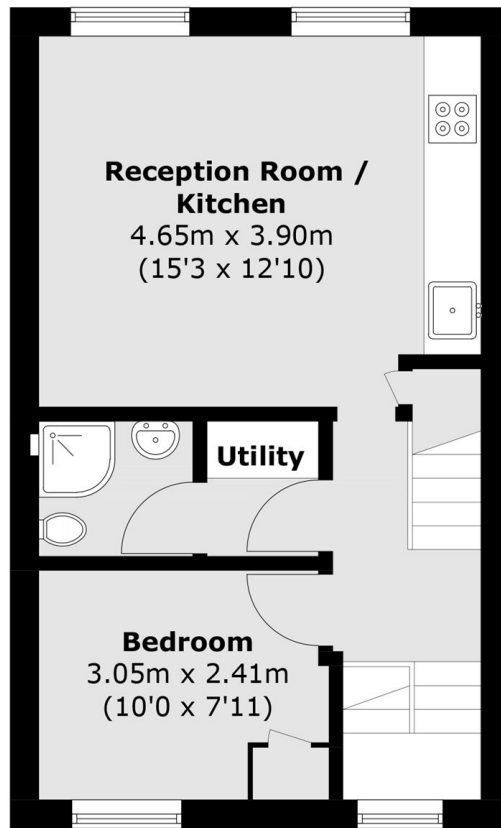
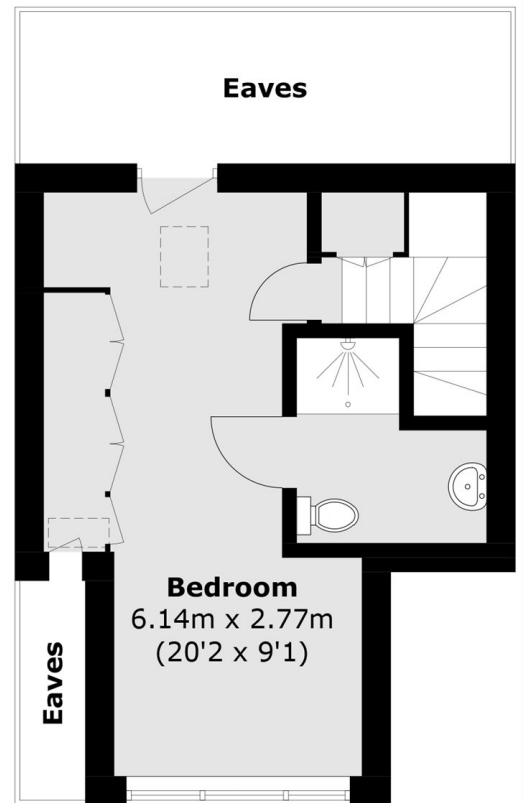


ABOUT THE HOME

A beautifully presented two bedroom, two bathroom , split level flat. Located on Trinity Road, the property is close to Tooting Bec underground station (Northern line), Tooting Bec Common and conveniently located to a wide array of shops, bars and restaurants. The amenities of both Balham and Wandsworth Common are also easily accessible.






First Floor

Second Floor

Third Floor

Total area (approx.): 63.8 sq. m (686.8 sq. ft)
(Excluding Eaves)

JACKSONS TOOTING

3 Upper Tooting Road, London,
SW17 7TS
Sales: 020 8487 3175
Lettings: 020 8487 3176

Energy Rating: We aim to make our particulars both accurate and reliable. However they are not guaranteed; nor do they form part of an offer or contract. If you require clarification on any points then please contact us, especially if you're traveling some distance to view. Please note that appliances and heating systems have not been tested and therefore no warranties can be given as to their good working order.