



BRENDA ROAD, SW17

£925,000

- Wandsworth Common Location
- Victorian Conversion Flat
- Three Bedrooms
- Large Sitting Room
- Private Access
- Private Rear Garden





ABOUT THE HOME

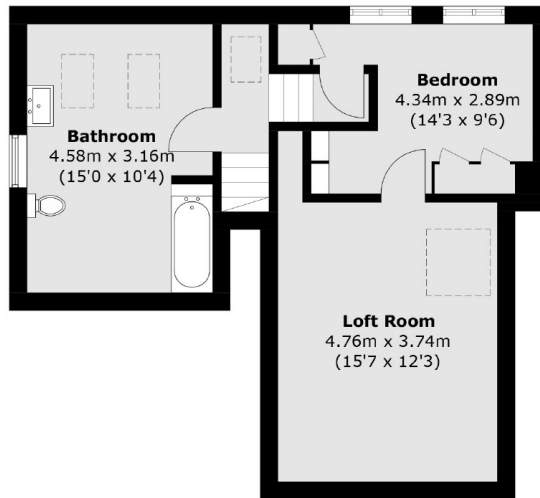
A stunning split level three bedroom, two bathroom, Victorian conversion maisonette that is presented in excellent condition throughout. Accessed via its own front door, the property is split across the first and second floor of this charming period house. The home boasts many of its original period features and fireplaces, and spans over 1400 sqft. On the first floor, there is a generous sitting room with a fireplace, ample seating space and a dining area. There is a separate well-appointed kitchen / breakfast room with fitted kitchen units and integrated appliances. Two double bedrooms with fitted wardrobes, with an en-suite bathroom in the master bedroom.

The second floor is made up of a very generous family bathroom and the third bedroom, again with fitted wardrobes, with access to the large eaves storage. The property also benefits from a generous private garden, with raised decking area.

Brenda Road is a highly sought after enclave road. Enviably located with easy access to both Wandsworth Common and Tooting Common, as well as Tooting Bec Tube station and Wandsworth Common mainline rail station.






Second Floor

Ground Floor
First Floor

Total area (approx.): 136.9 sq. m (1,473.5 sq. ft)

JACKSONS TOOTING

3 Upper Tooting Road, London,
SW17 7TS
Sales: 020 8487 3175
Lettings: 020 8487 3176

Energy Rating: We aim to make our particulars both accurate and reliable. However they are not guaranteed; nor do they form part of an offer or contract. If you require clarification on any points then please contact us, especially if you're traveling some distance to view. Please note that appliances and heating systems have not been tested and therefore no warranties can be given as to their good working order.