



ALSTON ROAD, SW17

£750,000

- Three Double Bedrooms
- Period Terraced House
- No Onward Chain
- South Facing Garden
- Open Planned Kitchen/Dining
- Potential To Extended Rear (STPP)





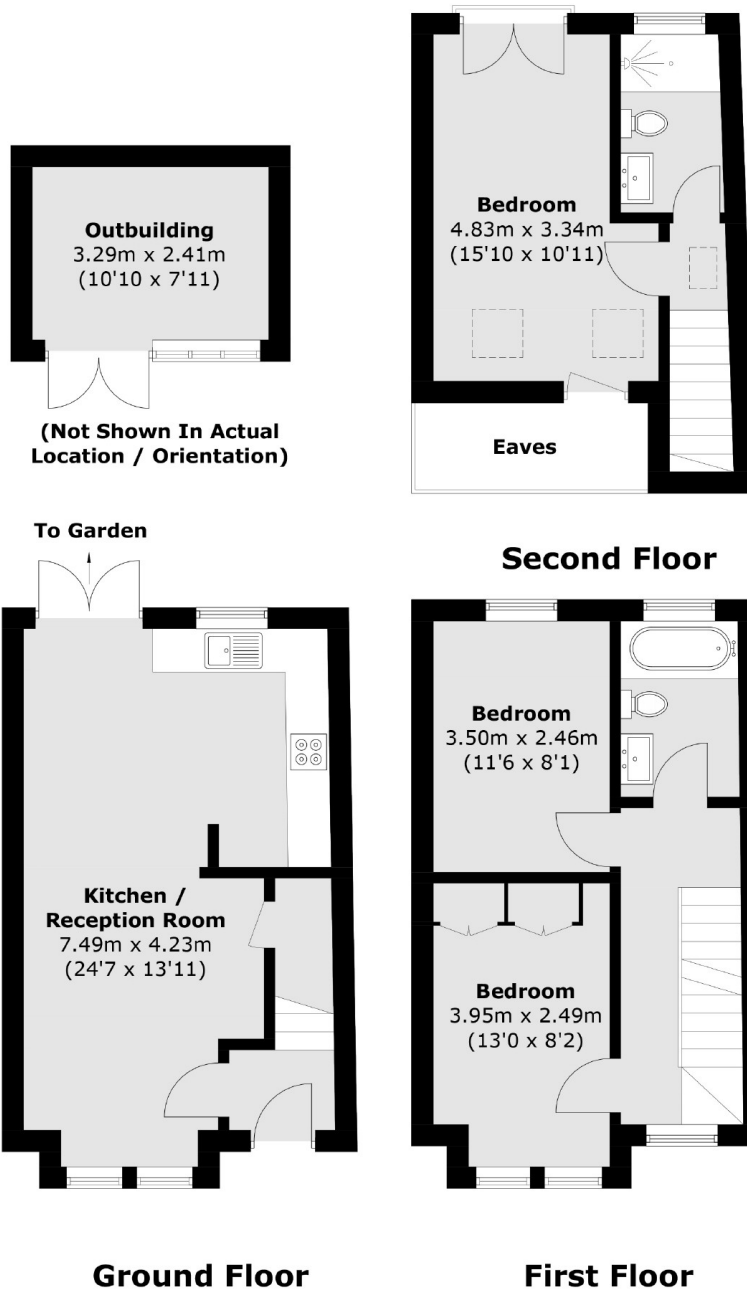
ABOUT THE HOME

A beautifully extended period terraced house offering three generous double bedrooms, a contemporary kitchen, and a modern family bathroom.

Alston Road is a quiet and pretty residential street situated just off Blackshaw Road and offers easy access to both Tooting Broadway Underground Station and Earlsfield Mainline Railway Station, with all the bars, restaurants and amenities that the two town centres have to offer.







Total area (approx.): 83.4 sq. m (897.6 sq. ft)
Outbuilding : 8.1 sq. m (87.2 sq. ft)
(Excluding Eaves)

JACKSONS TOOTING

3 Upper Tooting Road, London,
SW17 7TS
Sales: 020 8487 3175
Lettings: 020 8487 3176

Energy Rating: We aim to make our particulars both accurate and reliable. However they are not guaranteed; nor do they form part of an offer or contract. If you require clarification on any points then please contact us, especially if you're traveling some distance to view. Please note that appliances and heating systems have not been tested and therefore no warranties can be given as to their good working order.