



Henry Doulton Drive, SW17

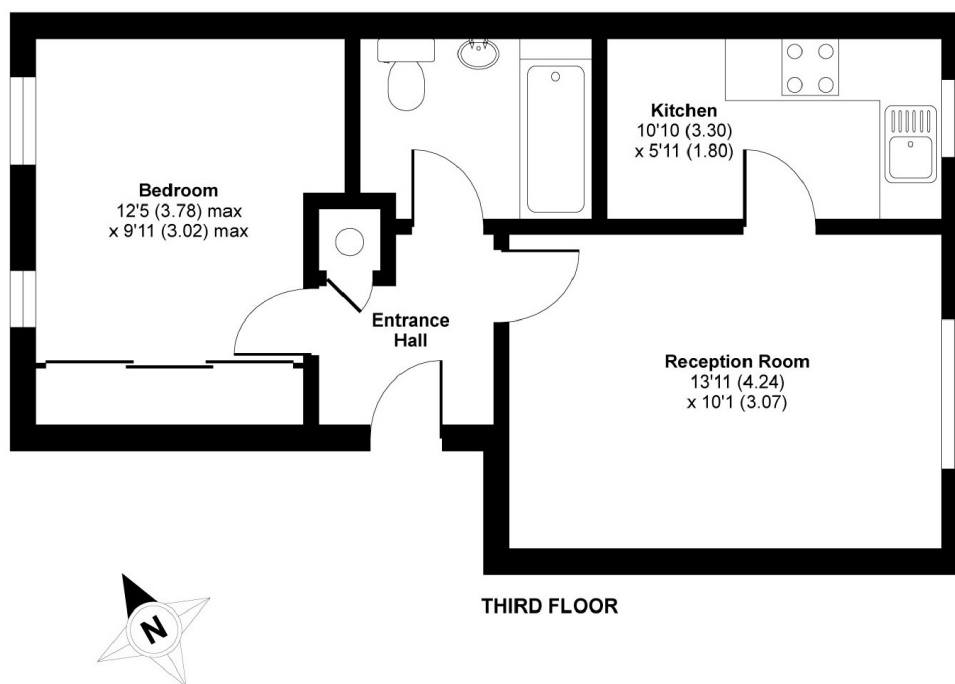
£1,075 PCM

A one double bedroom modern apartment comprising bright reception room, kitchen, large bedroom and bathroom perfect for a professional couple or single occupant.

Henry Doulton Drive is located in the popular Heritage Park development in Tooting Bec which is only seconds from Tooting Bec Common. Tooting Bec underground is within easy reach as are the local amenities of central Tooting. The property also benefits from off street parking.

- Modern Apartment
- Large Reception Room
- One Double Bedroom
- Off Street Parking
- Furnished
- Close To Station

For further information on the costs associated with renting a property, please pop into our office or visit our website.



APPROX. GROSS INTERNAL FLOOR AREA 422 SQ FT 39.2 SQ METRES

Henry Doulton Drive, London, SW17

Copyright nichecom.co.uk 2014 Produced for Jacksons the Independent Estate Agents REF : 517218

Jacksons Tooting
26 Tooting Bec Road
London
SW17 8BD
020 8767 0522
tooting.lettings@jacksonsestateagents.com

Energy Rating: C We aim to make our particulars both accurate and reliable. However they are not guaranteed; nor do they form part of an offer or contract. If you require clarification on any points then please contact us, especially if you're traveling some distance to view. Please note that appliances and heating systems have not been tested and therefore no warranties can be given as to their good working order.