



SPRINGFIELD DRIVE, SW17

£475,000

- 997 Year Lease
- NSBC Guarantee
- Private Balcony

- Modern
- Ideally Situated
- Energy Rating: B



1



1



1



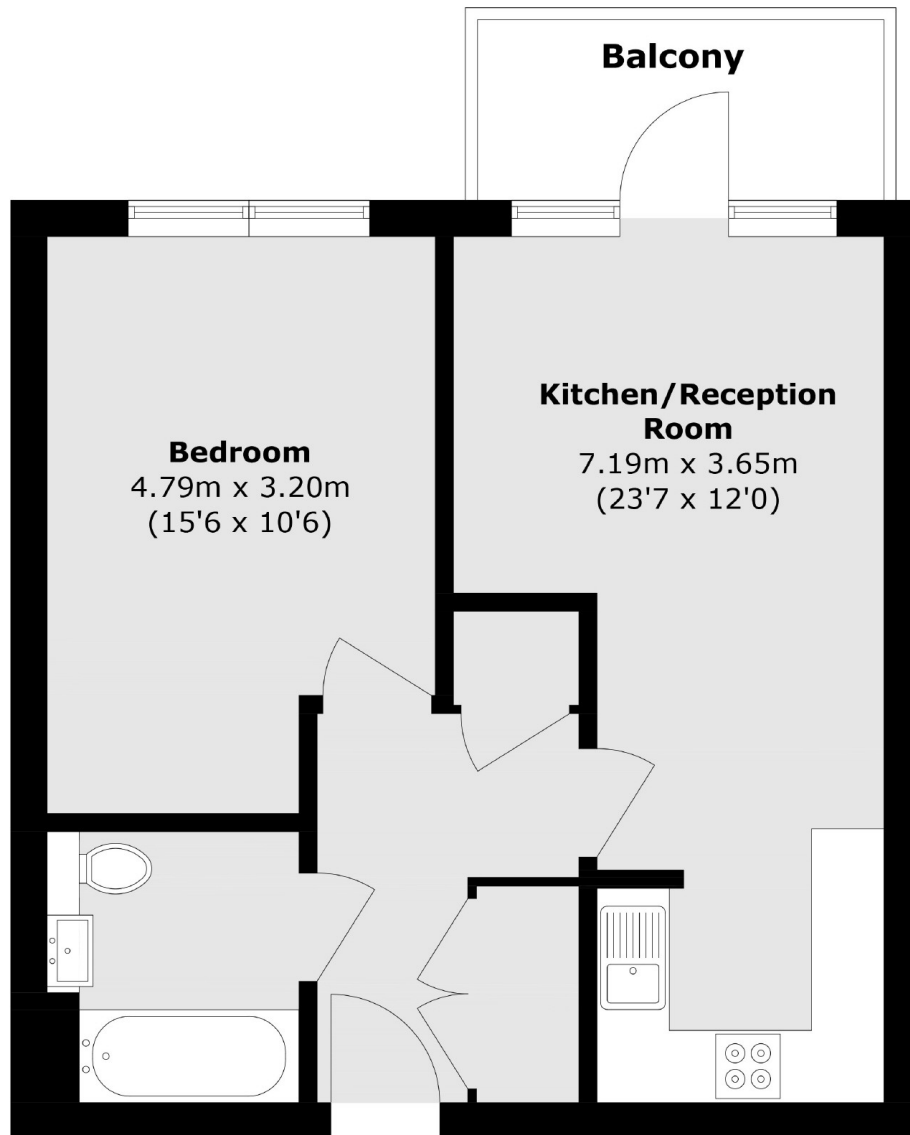
ABOUT THE HOME

Beautifully presented this modern first floor flat offers one bedroom, stylish bathroom, a spacious open plan kitchen living space with a private balcony.

Buttercup House sits within the highly desirable Springfield Place development, nestled conveniently between the popular neighbourhoods of Earlsfield, Tooting Bec and Wandsworth Common, all offering fantastic transport links into Central London via the tube and multiple overground Stations. A gym, Sainsbury's Local, nursery and cafe are set within the grounds of Springfield Place as well as the vast array of shops, restaurants and pubs on Earlsfield and Tooting High St. A new 32-acre park alongside the green spaces of Wandsworth common are only a short stroll away.







Total area (approx.): 49.8 sq. m (536.0 sq. ft)

Balcony area (approx.): 5.0 sq. m (53.8 sq. ft)

JACKSONS TOOTING

3 Upper Tooting Road, London,
SW17 7TS
Sales: 020 8487 3175
Lettings: 020 8487 3176

Energy Rating: We aim to make our particulars both accurate and reliable. However they are not guaranteed; nor do they form part of an offer or contract. If you require clarification on any points then please contact us, especially if you're traveling some distance to view. Please note that appliances and heating systems have not been tested and therefore no warranties can be given as to their good working order.