



RECTORY LANE, SW17

£425,000

- End of Terrace
- Freehold House
- Private Parking

- Tooting Bec
- Chain Free
- Private Garden



1



1



1



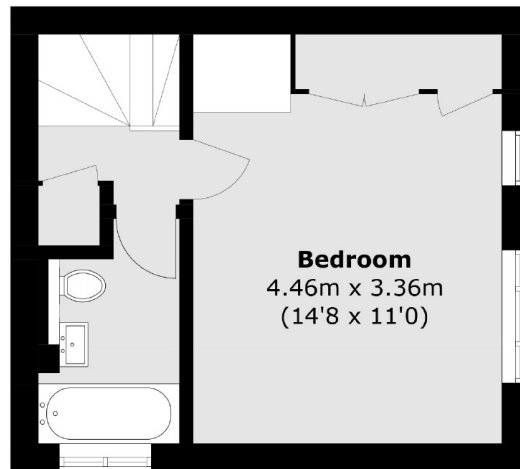
ABOUT THE HOME

A modern one bedroom, freehold house. Sold with no onward chain.

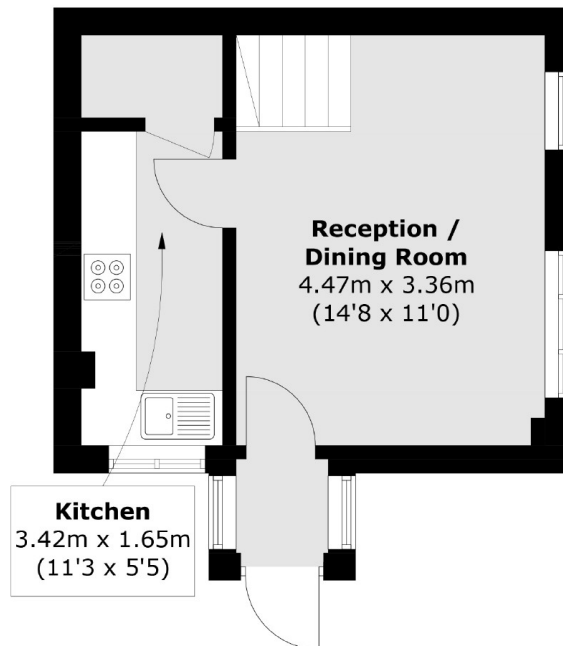
Rectory Lane is in a prime Tooting Bec location, within only a short ten minute walk to Tooting Bec Common and Tooting Bec underground station. All the shops, cafés and bars of Tooting and Balham are nearby, as well as the increasingly popular Tooting Broadway markets, filled with independent shops and restaurants.







First Floor



Ground Floor

Total area (approx.): 46.4 sq. m (499.3 sq. ft)

JACKSONS TOOTING

3 Upper Tooting Road, London,
SW17 7TS
Sales: 020 8487 3175
Lettings: 020 8487 3176

Energy Rating: D We aim to make our particulars both accurate and reliable. However they are not guaranteed; nor do they form part of an offer or contract. If you require clarification on any points then please contact us, especially if you're traveling some distance to view. Please note that appliances and heating systems have not been tested and therefore no warranties can be given as to their good working order.