



GILBEY ROAD, SW17

£475,000

- Renovated Victorian maisonette
- One Double Bedroom
- Private Garden
- Open Plan Kitchen
- Modern Bathroom
- EPC Rating: C



1



1



1





## ABOUT THE HOME

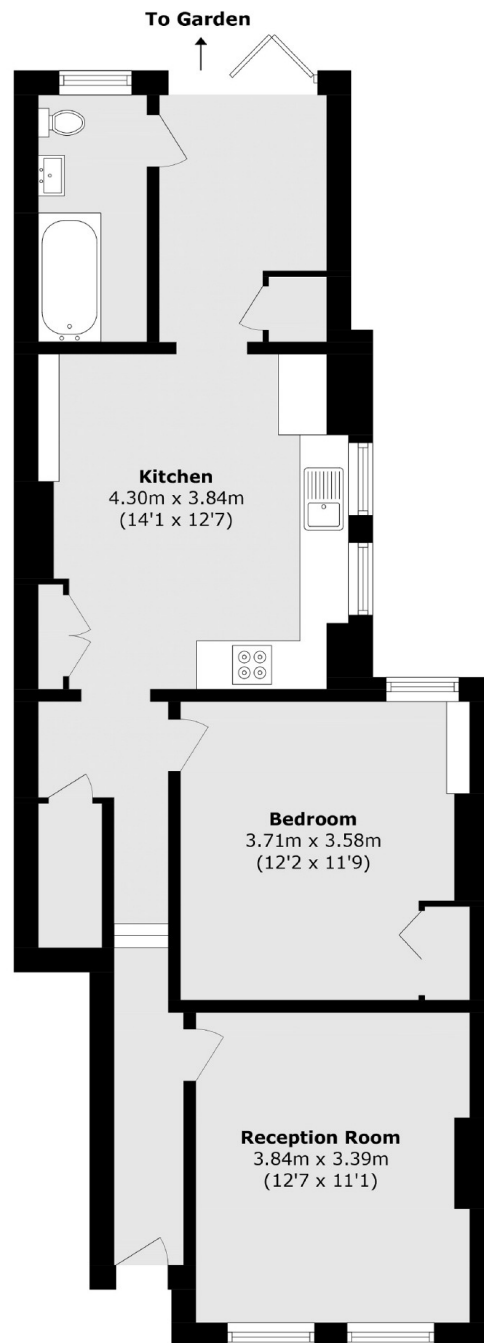
This beautifully presented one-bedroom ground floor garden maisonette is in excellent condition throughout. It offers a spacious front reception room, a well-proportioned double bedroom, a newly renovated W/C, and an open planned kitchen that leads seamlessly into a private garden.

Gilbey Road is a highly sought-after residential street, ideally located just moments from Tooting Broadway Tube Station and St George's University Hospital. Residents benefit from a range of amenities nearby, including large chain supermarkets, local convenience stores, and the vibrant and ever-popular Tooting Broadway Market all right on your doorstep.









Total area (approx.): 63.9 sq. m (687.8 sq. ft)

#### JACKSONS TOOTING

3 Upper Tooting Road, London,  
SW17 7TS

Sales: 020 8487 3175

Lettings: 020 8487 3176

Energy Rating: We aim to make our particulars both accurate and reliable. However they are not guaranteed; nor do they form part of an offer or contract. If you require clarification on any points then please contact us, especially if you're traveling some distance to view. Please note that appliances and heating systems have not been tested and therefore no warranties can be given as to their good working order.