



SPRINGFIELD DRIVE, SW17

£1,200,000

- Detached House
- 3 Double Bedrooms
- South Facing Garden
- Off Street Parking x 2
- Eat-In Kitchen/Diner
- 2 Bathrooms + Utility Room





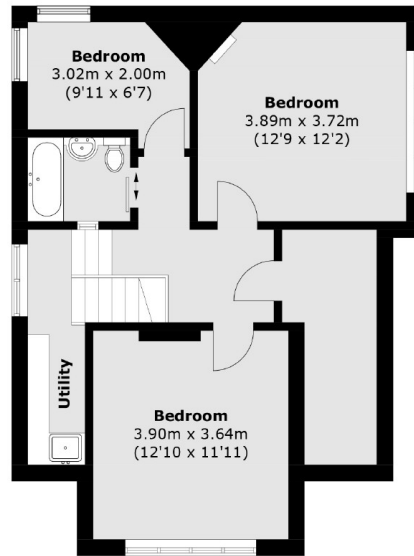
ABOUT THE HOME

A substantial three double bedroom detached period home in prime Tooting Bec, formerly the 1840's gate keepers home. The property has recently been renovated throughout to a very high standard. Internally amassing in excess of 1300 sqft of well proportioned living accommodation, with potential to extend further subject to planning consent. The layout comprises; A modern and very stylish minimalist eat-in kitchen/diner with fully integrated appliances, including wine fridge and ample dining space. Sitting room with original A ground floor WC with separate shower room and access out onto a wonderful south facing garden that wraps around this stunning detached home and concludes the ground floor. Returning inside to the first floor, you will find three spacious double bedrooms, an opulent family bathroom, separate utility room conveniently off of the landing and finally ample eaves storage space.

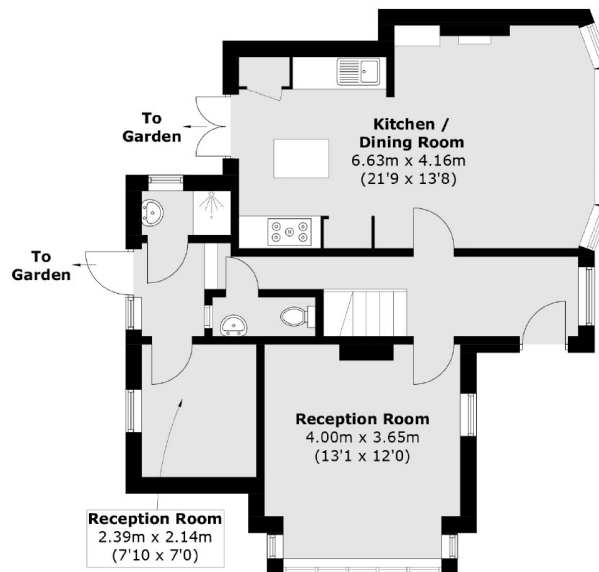
Springfield Drive is a sought after and convenient location. Positioned at the end of Glenburnie Road which is a popular area due to its proximity to Tooting Bec Common and underground station, Wandsworth Common, Earlsfield and Balham. As well as the shops, restaurants, bars and cafés at these locations.







First Floor



Ground Floor

Total area (approx.): 122.9 sq. m (1,322.8 sq. ft)

JACKSONS TOOTING

3 Upper Tooting Road, London,
SW17 7TS
Sales: 020 8487 3175
Lettings: 020 8487 3176

Energy Rating: We aim to make our particulars both accurate and reliable. However they are not guaranteed; nor do they form part of an offer or contract. If you require clarification on any points then please contact us, especially if you're traveling some distance to view. Please note that appliances and heating systems have not been tested and therefore no warranties can be given as to their good working order.