

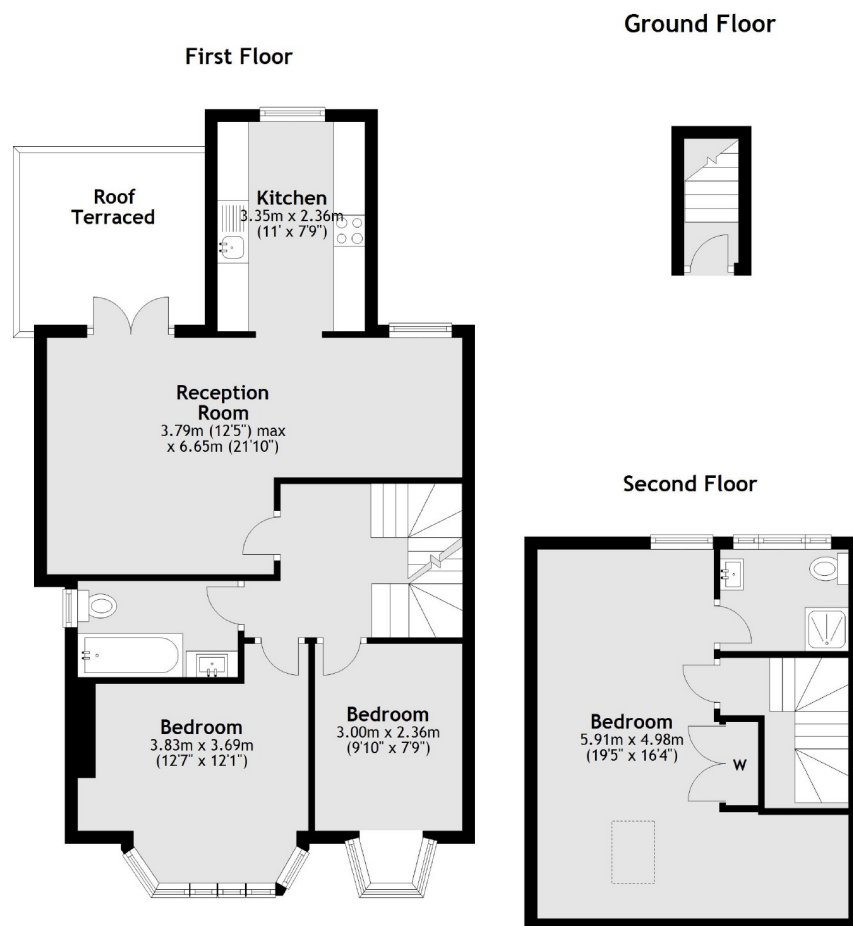


## Gateside Road, SW17

£660,000

A new developed first and second floor three double bedroom flat with a private south facing roof terrace. Presented in immaculate condition, this property benefits from having two bathrooms with underfloor Hive Smart heating and a large semi open plan kitchen living space.

- Three Double Bedrooms
- Two Bathrooms
- First Floor Flat
- Newly Developed
- South Facing Roof Terrace
- Split Level



Total area: approx. 91.7 sq. metres (986.9 sq. feet)

Jacksons Tooting  
26 Tooting Bec Road  
London  
SW17 8BD  
020 8767 0522  
tooting.sales@jacksonsestateagents.com

Energy Rating: We aim to make our particulars both accurate and reliable. However they are not guaranteed; nor do they form part of an offer or contract. If you require clarification on any points then please contact us, especially if you're traveling some distance to view. Please note that appliances and heating systems have not been tested and therefore no warranties can be given as to their good working order.