



BICKERSTETH ROAD, SW17

£475,000

- Victorian Maisonette
- Ground Floor
- 2 Large Double Bedrooms
- Open Plan Lounge / Kitchen
- Private Garden
- Long Lease



2



1



1





## ABOUT THE HOME

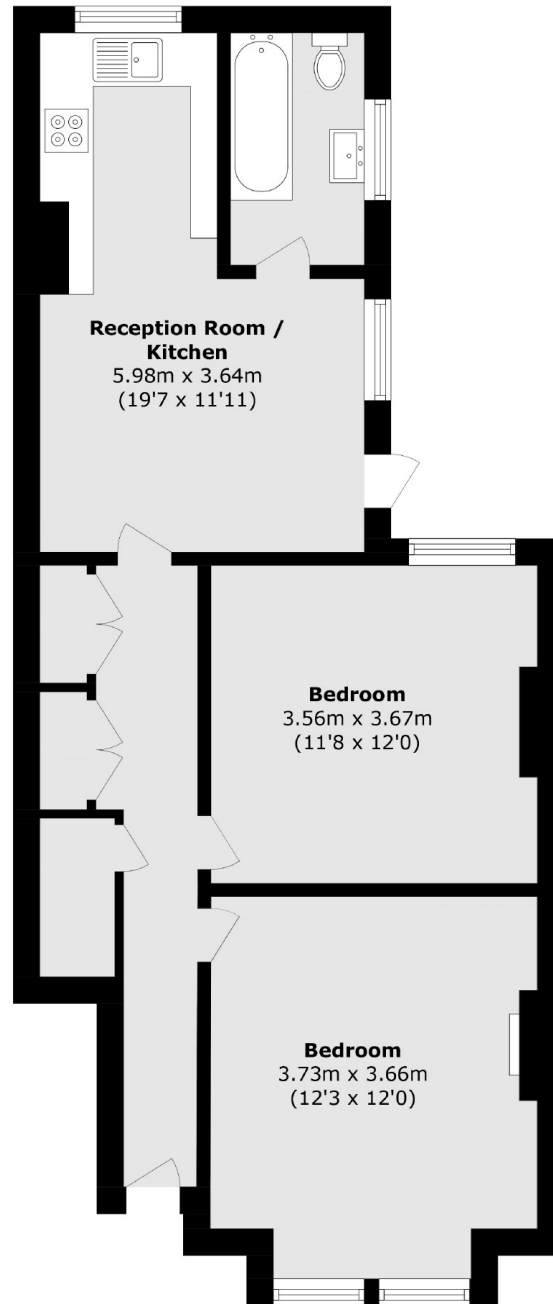
A stylishly presented two double bedroom, ground floor garden maisonette. Presented in excellent order throughout and located on Bickersteth Road. Internally the property comprises; Two spacious and equally sized double bedrooms with plantation shutters to the double glazed windows in the front bedroom. A tiled bathroom suite with shower over the bath and finally an open plan kitchen / lounge with a well appointed fitted kitchen and direct access to a private rear garden. The property also benefits from a long lease in excess of 100 years.

Bickersteth Road is a popular tree lined residential street, close to the amenities and high street shopping of Tooting Broadway which include, cafés, supermarkets, restaurants and renowned Broadway Market. As well as being just a short walk to both Tooting Broadway underground station and Tooting Rail Station with regular bus routes also available at the end of your road.









Total area (approx.): 61.4 sq. m (660.9 sq. ft)

#### JACKSONS TOOTING

3 Upper Tooting Road, London,  
SW17 7TS  
Sales: 020 8487 3175  
Lettings: 020 8487 3176

Energy Rating: We aim to make our particulars both accurate and reliable. However they are not guaranteed; nor do they form part of an offer or contract. If you require clarification on any points then please contact us, especially if you're traveling some distance to view. Please note that appliances and heating systems have not been tested and therefore no warranties can be given as to their good working order.