



ST. BENEDICTS CLOSE, SW17

£275,000

- Modern Development
- 1 Spacious Bedroom
- Open Plan Kitchen / Reception
- Stylish Bathroom and Kitchen
- Excellent Location
- Allocates Parking Bay







## ABOUT THE HOME

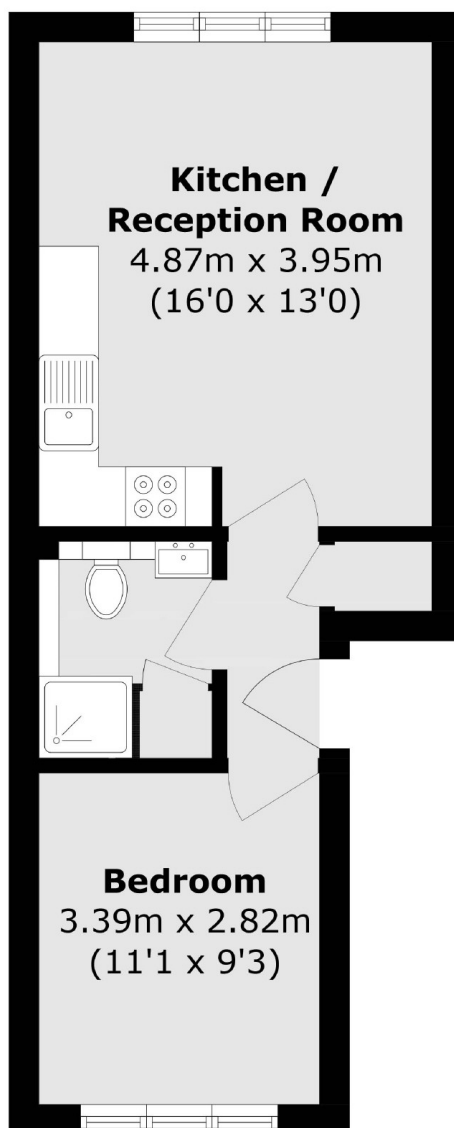
\*\*\*OFFERS IN EXCESS OF\*\*\*

A well presented and modern one double bedroom apartment. Positioned on the first floor of this well located, secure and private development. Benefiting from a long lease, residents parking and within easy reach of Tooting Bec Common, equidistance of Tooting Broadway and Tooting Bec tube station as well as the well connected mainline rail at Tooting Rail station.

Internally the property is flooded with natural light throughout and comprises; A spacious open plan kitchen / lounge with a well appointed fitted kitchen. A generous double bedroom with ample room for wardrobes and bedroom storage and finally a stylish bathroom that has recently been replaced.







Total area (approx.): 36.6 sq. m (393.9 sq. ft)

#### JACKSONS TOOTING

3 Upper Tooting Road, London,

SW17 7TS

Sales: 020 8487 3175

Lettings: 020 8487 3176

Energy Rating: C We aim to make our particulars both accurate and reliable. However they are not guaranteed; nor do they form part of an offer or contract. If you require clarification on any points then please contact us, especially if you're traveling some distance to view. Please note that appliances and heating systems have not been tested and therefore no warranties can be given as to their good working order.