



RECTORY LANE, SW17

£300,000

- Victorian Conversion
- Spacious Double Bedroom
- Sought After Location
- Ample Storage Space
- Well Presented
- Ideal First Time Purchase



1



1



1





## ABOUT THE HOME

\* Offers in Excess of £300,000\*

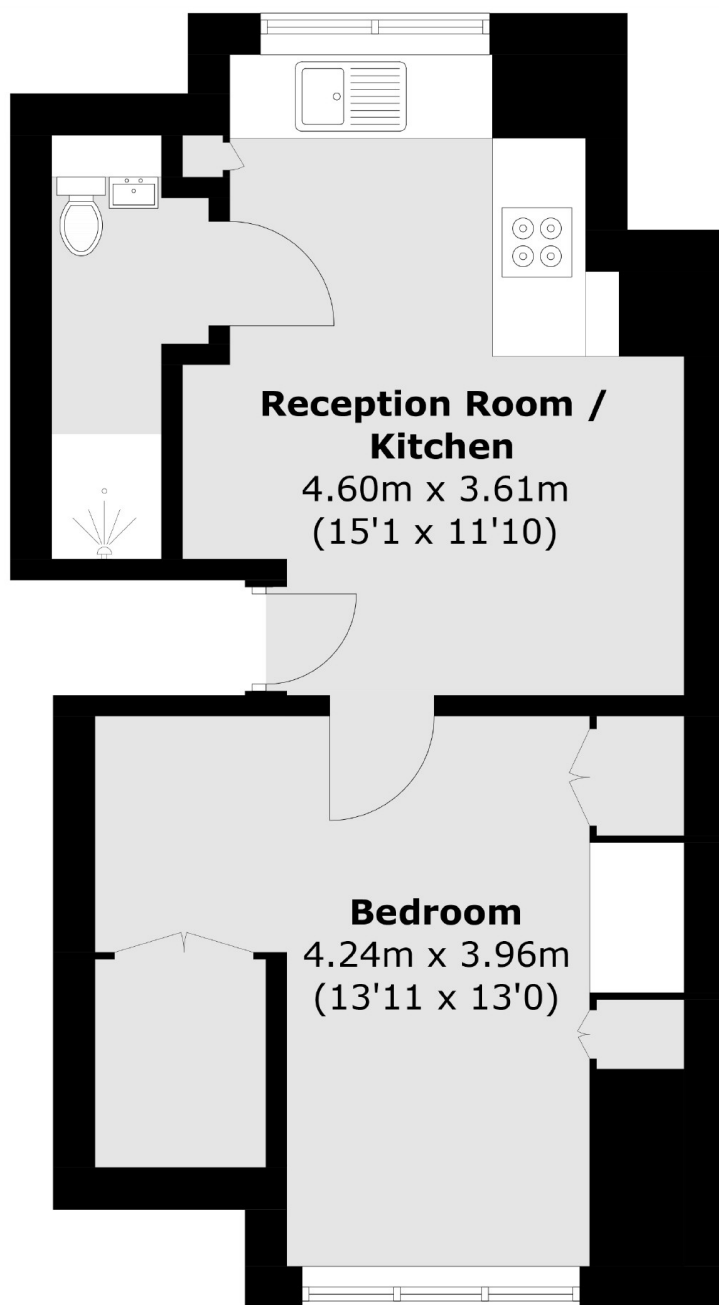
A well presented top floor Victorian conversion flat that is flooded with natural light throughout. Internally the property comprises an open plan kitchen reception room with well appointed fitted kitchen. Separate stylish bathroom and finally a generous bedroom with fitted wardrobes and access to generous eaves storage space.

Rectory Lane is a sought after location due to its close proximity to Tooting Broadway tube station, Tooting mainline rail station running into Blackfriars and Tooting Bec Common at the top end of the road. Within short walking distance you will find a selection of Gastro pubs, bars and eclectic mix of restaurants. As well as the renowned Tooting Broadway Market.









Total area (approx.): 33.5 sq. m (360.6 sq. ft)

#### JACKSONS TOOTING

3 Upper Tooting Road, London,  
SW17 7TS

Sales: 020 8487 3175

Lettings: 020 8487 3176

Energy Rating: We aim to make our particulars both accurate and reliable. However they are not guaranteed; nor do they form part of an offer or contract. If you require clarification on any points then please contact us, especially if you're traveling some distance to view. Please note that appliances and heating systems have not been tested and therefore no warranties can be given as to their good working order.