



NIMROD ROAD, SW16

£900,000

- Graveney School Catchment
- Edwardian Terrace
- 4 Bedrooms, 2 Bathroom
- Large Sitting Room
- Generous Kitchen / Diner.
- Potential to Extend STPP





ABOUT THE HOME

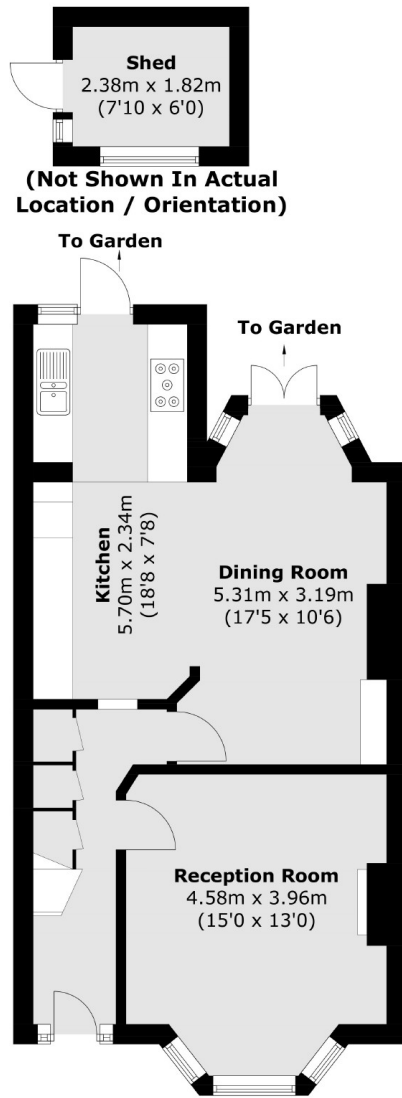
A gorgeous 4 bedroom Edwardian terrace family home located on Nimrod Road in the heart of the Furzedown. Within moments of the highly sought Graveney School.

The property has been modernised while retaining many of its original period features and charm, having been owned by the same family for 37 years. Internally comprising; A sitting room with original fireplace, separate generously proportioned kitchen / diner flooded with natural light and leading out onto a low maintenance family garden. Returning inside to the first floor where there are 2 large double bedrooms, a family bathroom and nursery / home office. Stairs take you up to the loft room that was converted to offer you the 4th and principle bedroom, with walk in wardrobe, eaves storage and second WC / bathroom.

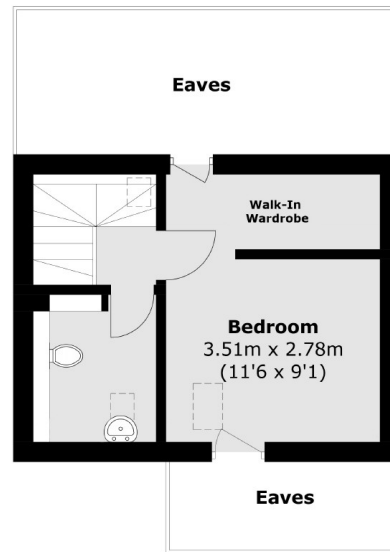
Nimrod Road is a highly sought after location, namely due to its leafy green feel, some of the most sought after primary and secondary schools in SW16 and an abundance of recreational parks, open green space of Tooting Common as well as a the village feel of the local businesses on Moyser Road.



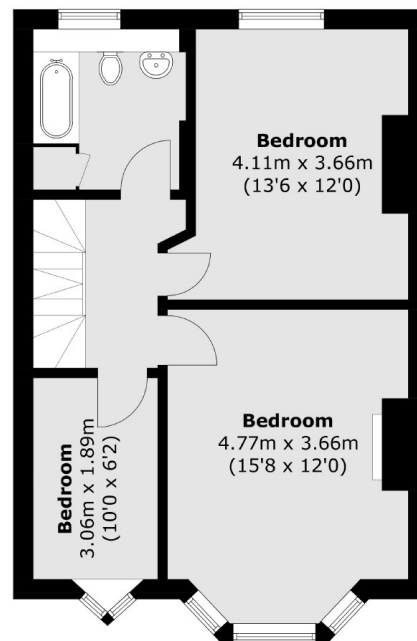




Ground Floor



Second Floor



First Floor

Total area (approx.): 124.1 sq. m (1,335.7 sq. ft)
(Excluding Eaves)
Shed: 4.4 sq. m (47.4 sq. ft)

JACKSONS TOOTING

3 Upper Tooting Road, London,
SW17 7TS
Sales: 020 8487 3175
Lettings: 020 8487 3176

Energy Rating: We aim to make our particulars both accurate and reliable. However they are not guaranteed; nor do they form part of an offer or contract. If you require clarification on any points then please contact us, especially if you're traveling some distance to view. Please note that appliances and heating systems have not been tested and therefore no warranties can be given as to their good working order.