



EDENCOURT ROAD, SW16

£380,000

- Ground Floor Garden Flat
- 2 Bedrooms
- Open Plan Kitchen / Lounge
- Stylish Bathroom
- Private Rear Garden
- 100+ Year lease



2



1



1





## ABOUT THE HOME

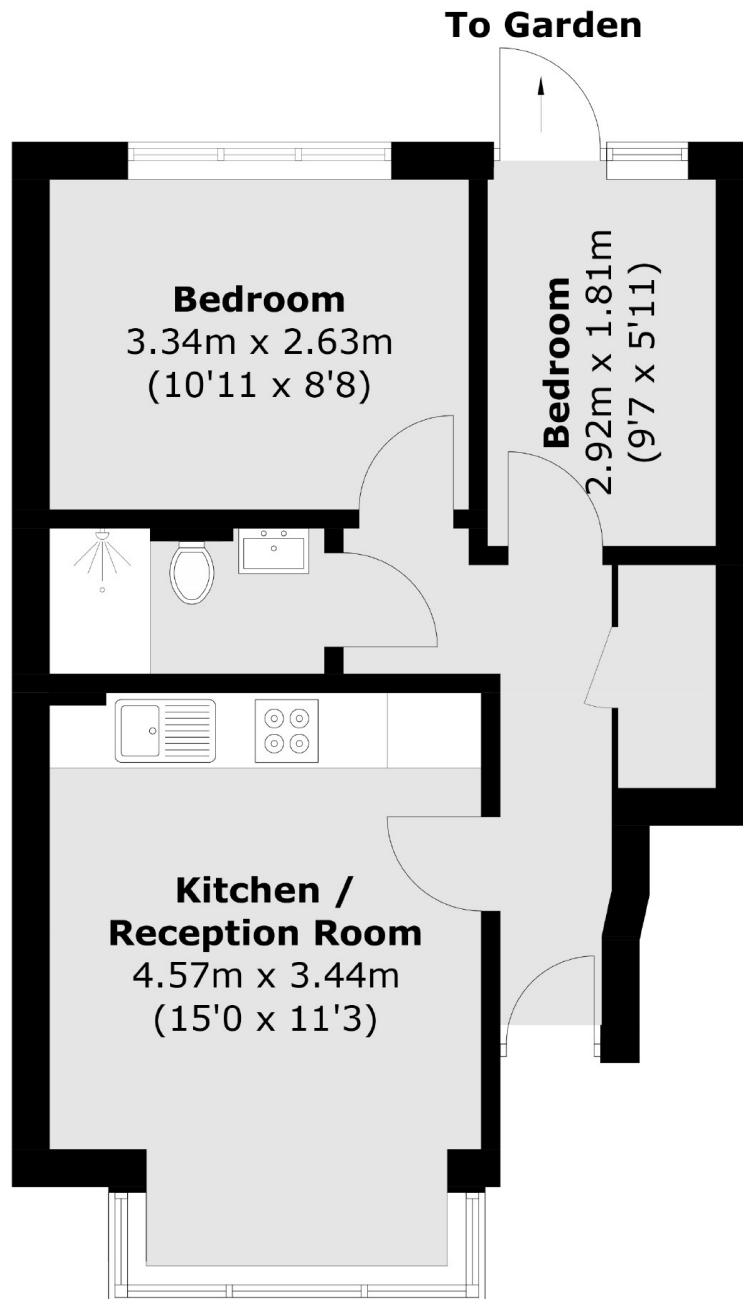
A newly renovated 2 bedroom ground floor garden flat, that been completely modernised to include a stylish fitted kitchen and modern tiled bathroom. Sold with the added benefits of a long lease, no onward chain and ideally located between Tooting Broadway and Streatham.

Positioned equidistance of both Tooting train Station and Streatham Common train station. A selection of highly sought after primary and secondary schools are also within close proximity.









Total area (approx.): 39.9 sq. m (429.5 sq. ft)

#### JACKSONS TOOTING

3 Upper Tooting Road, London,  
SW17 7TS

Sales: 020 8487 3175

Lettings: 020 8487 3176

Energy Rating: D We aim to make our particulars both accurate and reliable. However they are not guaranteed; nor do they form part of an offer or contract. If you require clarification on any points then please contact us, especially if you're traveling some distance to view. Please note that appliances and heating systems have not been tested and therefore no warranties can be given as to their good working order.