



TOOTING BEC ROAD, SW17

£950,000

- Five bedrooms
- Fully Extended
- Secure Garage
- Great Location
- Chain Free
- Close to Tooting Bec Common





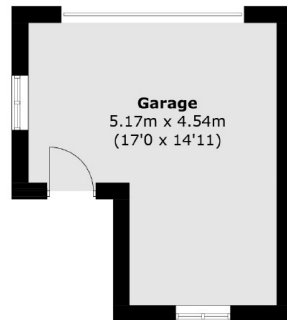
ABOUT THE HOME

Offers In Excess of £950,000
A charming mid-terraced family home from the 1930s, offering excellent potential for further expansion. Spanning an impressive 1,700 square feet across three floors, this property provides ample space and opportunity.

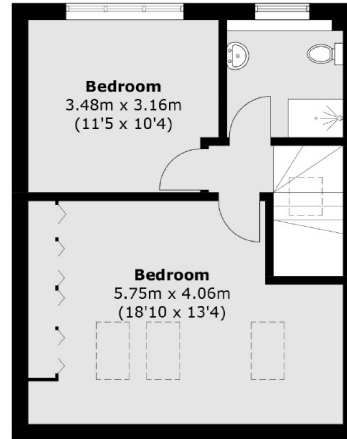
Located on Tooting Bec Road, the property is close to Tooting Bec underground station (Northern line), Tooting Bec Common and conveniently located to a wide array of shops, bars and restaurants. The amenities of both Balham and Wandsworth Common are also easily accessible.



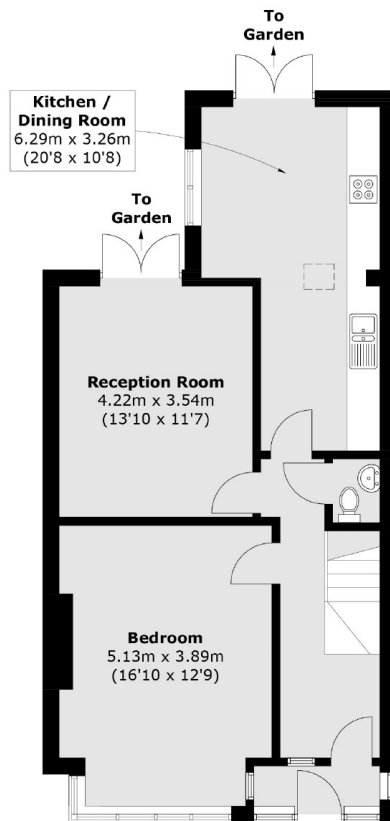




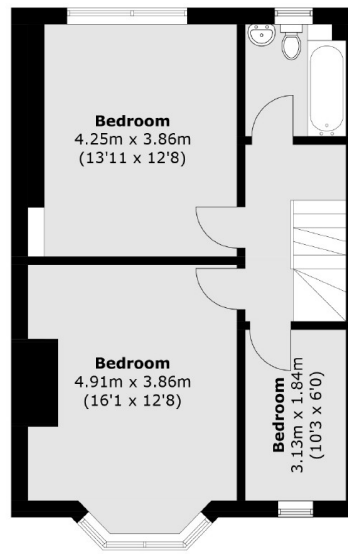
Ground Floor
(Not Shown In Actual
Location / Orientation)



Second Floor



Ground Floor



First Floor

Total area (approx.): 160.7 sq. m (1,729.8 sq. ft)
Garage: 19.5 sq. m (209.9 sq. ft)

JACKSONS TOOTING

3 Upper Tooting Road, London,
SW17 7TS
Sales: 020 8487 3175
Lettings: 020 8487 3176

Energy Rating: D We aim to make our particulars both accurate and reliable. However they are not guaranteed; nor do they form part of an offer or contract. If you require clarification on any points then please contact us, especially if you're traveling some distance to view. Please note that appliances and heating systems have not been tested and therefore no warranties can be given as to their good working order.