



ELDERFIELD PLACE, SW17

£895,000

- 5 Bedrooms, 3 Bathrooms
- Large Lounge
- Kitchen / Diner
- Large Utility Room
- Garage + Off Street Parking
- South Facing Garden





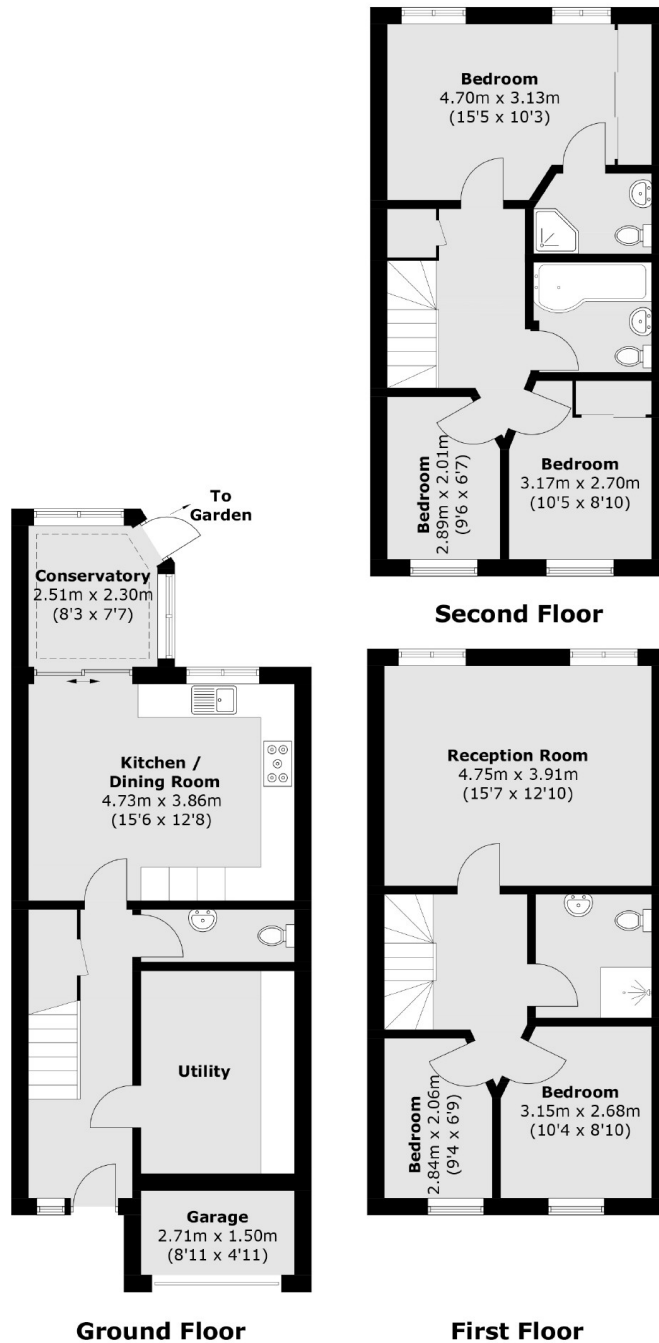
ABOUT THE HOME

A generously proportioned five bedroom, three bathroom townhouse split over three floors. Well presented throughout by the current owners. Sold with no onward chain, garage, utility room and potential to extend on the ground floor. As well as off street parking. The property amasses an impressive 1530sqft / 142sqm and a generous south facing garden.

Located in the highly sought-after Heritage Park development, popular due to its close proximity to Tooting Bec tube station, Tooting common and a number of sought after local children's nurseries, primary and secondary schools.







Approx Internal Area: 138.1 sq. m (1,486.4 sq. ft)
 Garage: 4.1 sq. m (44.1 sq. ft)
 Total: 142.2 sq. m (1,530.5 sq. ft)

JACKSONS TOOTING

3 Upper Tooting Road, London,
 SW17 7TS
 Sales: 020 8487 3175
 Lettings: 020 8487 3176

Energy Rating: We aim to make our particulars both accurate and reliable. However they are not guaranteed; nor do they form part of an offer or contract. If you require clarification on any points then please contact us, especially if you're traveling some distance to view. Please note that appliances and heating systems have not been tested and therefore no warranties can be given as to their good working order.