



Brudenell Road, SW17

£2,500 PCM

Offering ample living space throughout, this large four bedroom terraced house would make the perfect home for professional sharers.

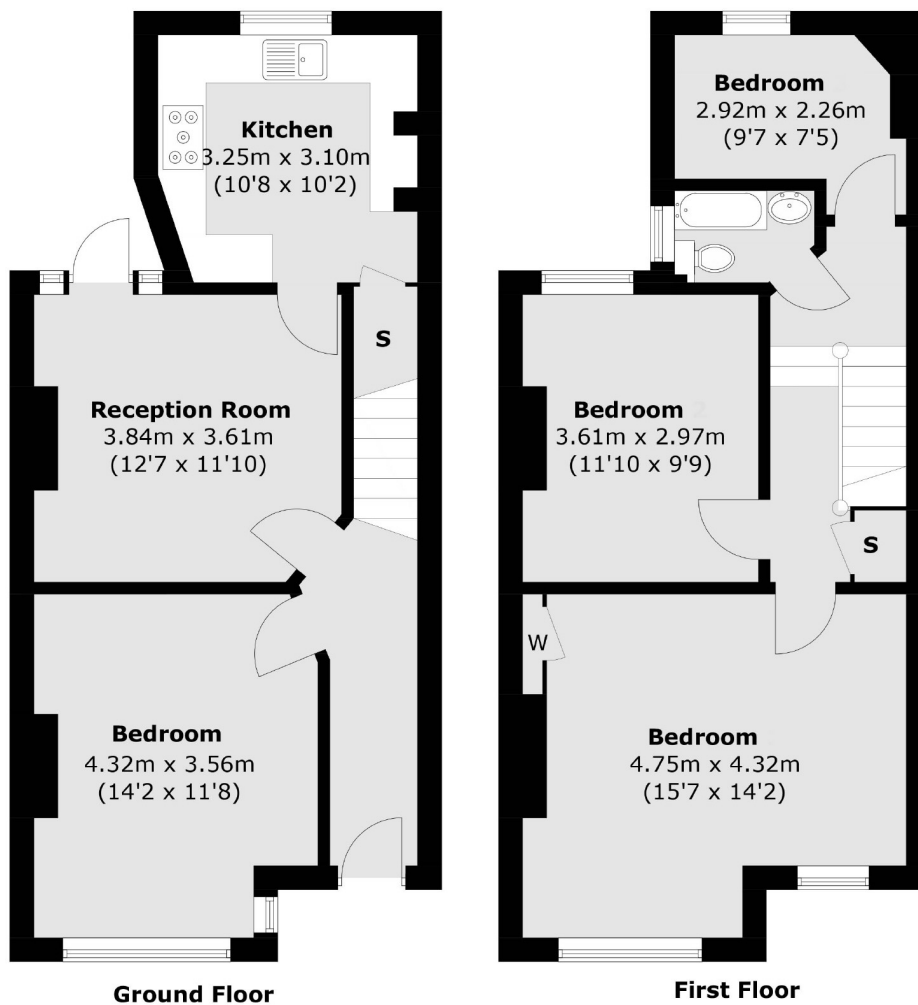
- Four Bedrooms
- Modern Fitted Kitchen
- Fitted Bathroom
- Private Garden
- Close To Tooting Bec Tube
- Furnished

For further information on the costs associated with renting a property, please pop into our office or visit our website.



Brudenell Road is ideally located within easy reach of Tooting Bec and the plethora of shops, bars and restaurants the area has to offer.





Total area (approx.): 90.2 sq. m (971 sq. ft)

Jacksons Balham
8-11 Balham Station Road
London
SW12 9SG
020 8675 6565
balham.lettings@jacksonsestateagents.com

Energy Rating: E We aim to make our particulars both accurate and reliable. However they are not guaranteed; nor do they form part of an offer or contract. If you require clarification on any points then please contact us, especially if you're traveling some distance to view. Please note that appliances and heating systems have not been tested and therefore no warranties can be given as to their good working order.