



CROCKERTON ROAD, SW17

£650,000

- Ground Floor Garden Flat
- Two Large Bedrooms
- Stylishly Presented Throughout
- Private Rear Garden
- Home Office
- Sought After Location





## ABOUT THE HOME

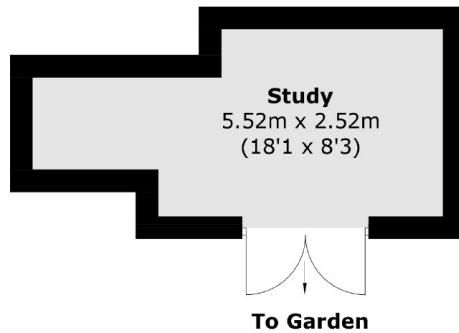
A stunning two double bedroom ground floor garden flat, amassing an impressive 722sqft with the addition of a 122sqft home office located in the garden.

Internally the property comprises; Two generously proportioned double bedrooms, both with inbuilt wardrobes. A well stylish family bathroom with shower over the bath, well appointed kitchen with ample storage and worktop space. Original parquet floors run throughout the property and finally a wonderful reception room with space for a large dining area, which leads out onto the private rear garden, which has recently been landscaped and hosts a superb full operation home office away from the main residence.

Crockerton Road is a highly sought after, tree lined road. Flanked with Victorian terrace houses. Located within moments of Wandsworth Common where you will find a range of bars, restaurants and boutique local business's.

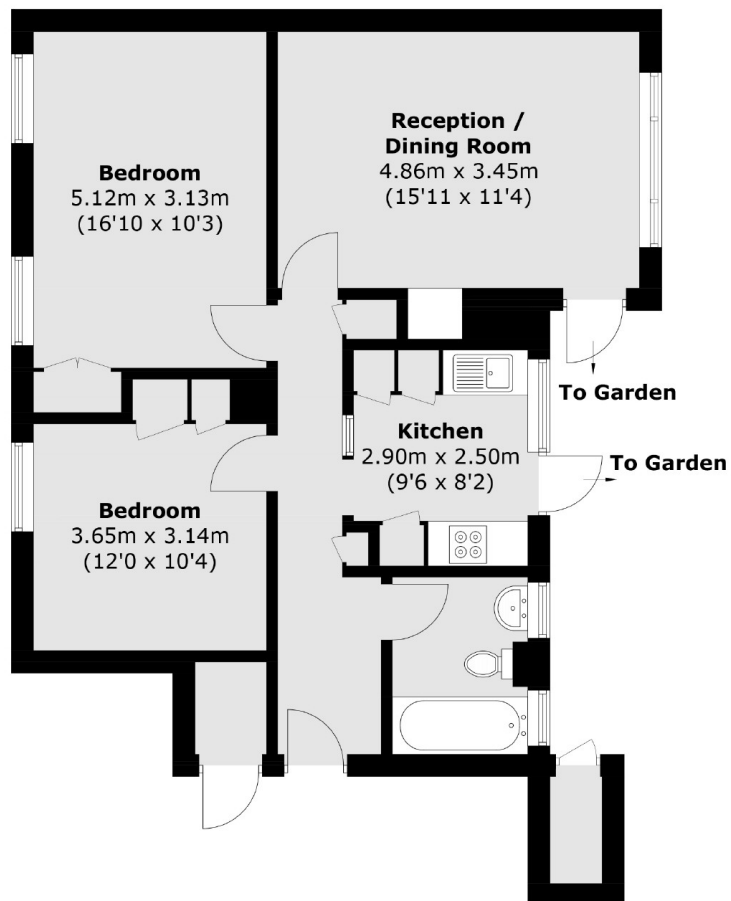






## Outbuilding

(Not Shown In Actual Location / Orientation)



Total area (approx.): 67.1 sq. m (722.3 sq. ft)  
Outbuilding (approx.): 11.4 sq. m (122.7 sq. ft)

### JACKSONS TOOTING

3 Upper Tooting Road, London,  
SW17 7TS  
Sales: 020 8487 3175  
Lettings: 020 8487 3176

Energy Rating: We aim to make our particulars both accurate and reliable. However they are not guaranteed; nor do they form part of an offer or contract. If you require clarification on any points then please contact us, especially if you're traveling some distance to view. Please note that appliances and heating systems have not been tested and therefore no warranties can be given as to their good working order.