



COTEFORD STREET, SW17

£535,000

- Freehold House
- 2 Bedrooms
- Stylishly Presented
- Modern Kitchen
- Fully Tiled Bathroom
- South Facing Garden





ABOUT THE HOME

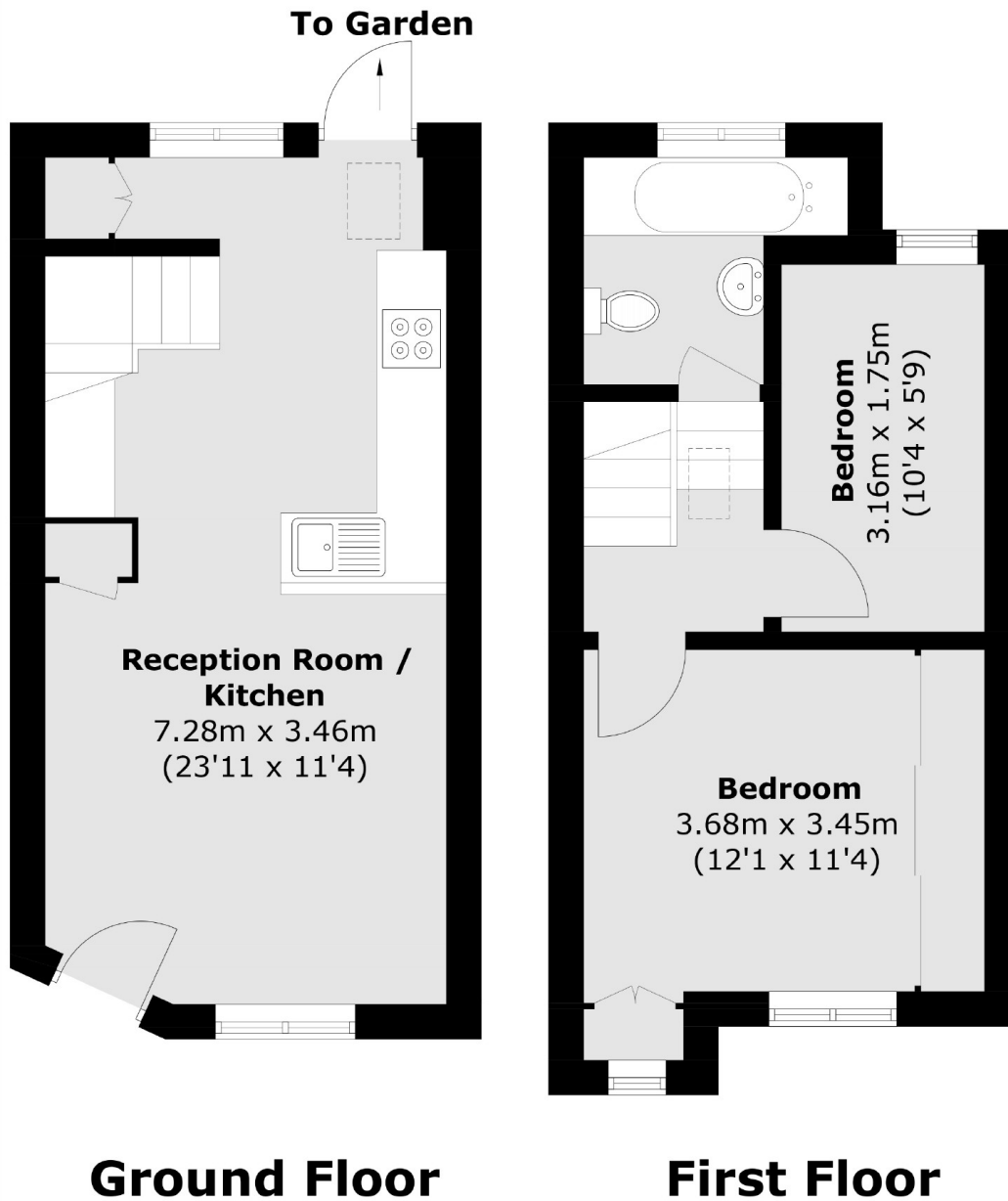
A beautifully presented 2 bedroom terrace house, located in the heart of the Totterdown Conservation area on Coteford Street.

Internally the property offers; A bright and spacious sitting room which has benefitted from the removal of internal walls to allow the light to flow through from the south facing rear of the property. A modern kitchen with separate utility cupboard that leads out to the generous sought facing garden. Moving to the first floor you will find two generous bedrooms and a fully tiled family bathroom.

Coteford Street is an ideal location for easy access to Tooting Bec and Broadway Underground as well as the shops and bars local to the area. There is also a vast array of restaurants, coffee shops and boutiques close by and the green open spaces of both Tooting Bec Common and Wandsworth Common are easily accessible.







Total area (approx.): 49.2 sq. m (529.6 sq. ft)

JACKSONS TOOTING

3 Upper Tooting Road, London,
SW17 7TS
Sales: 020 8487 3175
Lettings: 020 8487 3176

Energy Rating: We aim to make our particulars both accurate and reliable. However they are not guaranteed; nor do they form part of an offer or contract. If you require clarification on any points then please contact us, especially if you're traveling some distance to view. Please note that appliances and heating systems have not been tested and therefore no warranties can be given as to their good working order.