



RIBBLESDALE ROAD, SW16

£700,000

- Edwardian Conversion Flat
- 4 Large Doubles, 2 Bathrooms
- 1st and Second Floor
- Generous Sitting Room
- Private Roof Terrace
- No Onward Chain



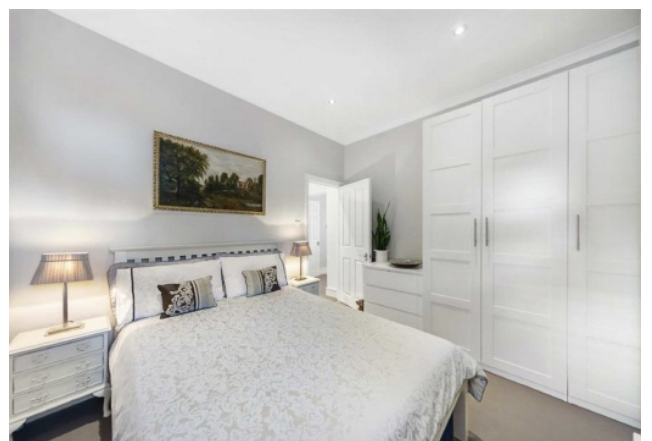


ABOUT THE HOME

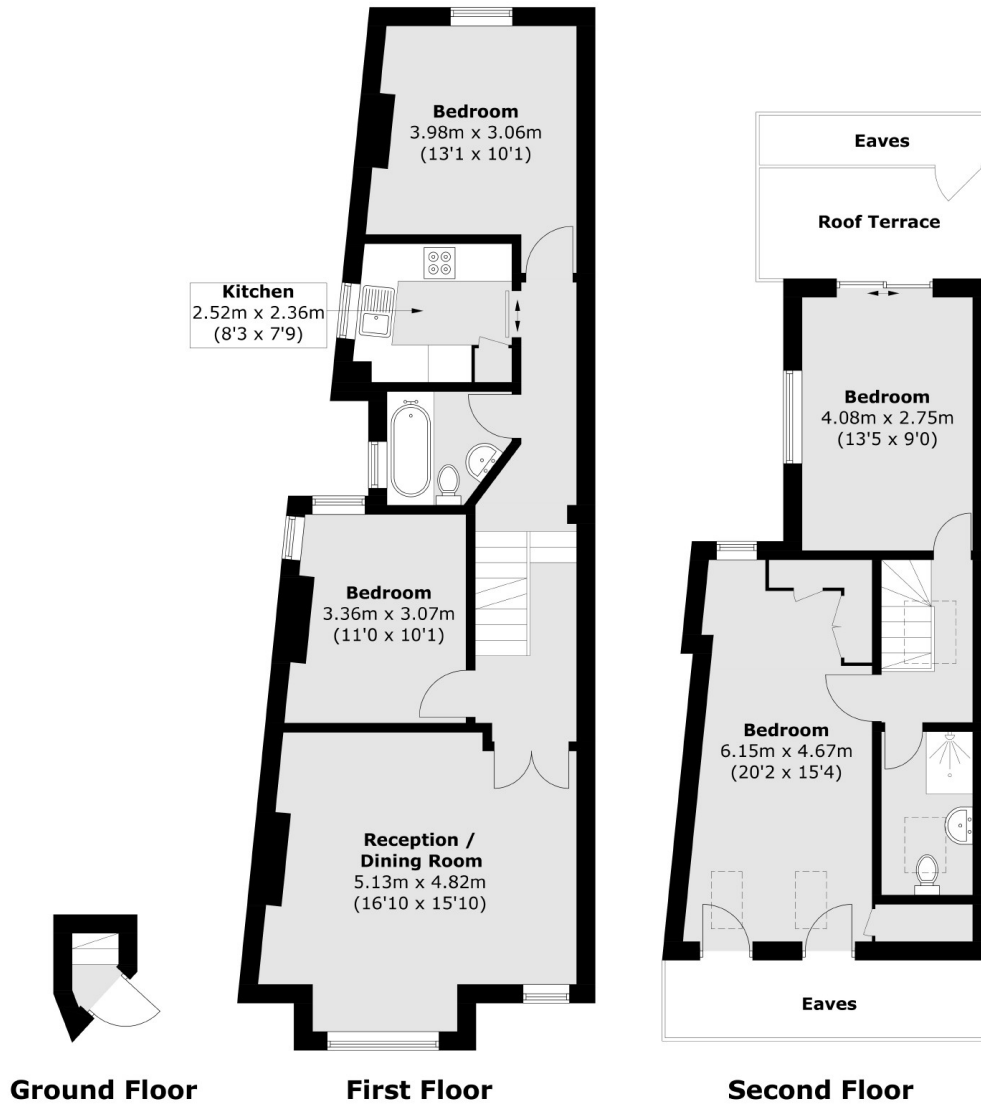
A stylish split level conversion flat, laid across the first and second floors of this Edwardian, halls-adjointing end of terrace house. The property has recently benefitted from a full extension and renovation, remaining sympathetic to its original Edwardian period features, character and charm.

Internally the property boasts an impressive 1112sqft / 103sqm and comprises; On the first floor, a large sitting room with ample space for a large dining table and chairs. Bespoke alcove storage, plantation shutters to the windows and a wonderful feature fireplace. There are two generous double bedroom's, a full tiled family bathroom with shower over the bath and finally a fully integrated shaker style kitchen. The second floor has been added by way of a loft conversion to provide a further bathroom. Two very spacious bedrooms, the larger having fitted wardrobes the other bedroom leading out to a private west facing roof terrace with access to loft storage space.

Ribblesdale Road is a sought after enclave road in the popular Furzedown area. Nestled between Tooting Bec and Streatham Common. Tooting Bec Common is only a short walk running into Tooting Bec tube station and Streatham Common mainline rail.







Total area (approx.): 103.4 sq. m (1,112.9 sq. ft)
 Roof Terrace : 6.6 sq. m (71.0 sq. ft)
 (Excluding Eaves)

JACKSONS TOOTING

3 Upper Tooting Road, London,
 SW17 7TS
 Sales: 020 8487 3175
 Lettings: 020 8487 3176

Energy Rating: We aim to make our particulars both accurate and reliable. However they are not guaranteed; nor do they form part of an offer or contract. If you require clarification on any points then please contact us, especially if you're traveling some distance to view. Please note that appliances and heating systems have not been tested and therefore no warranties can be given as to their good working order.