



Rostella Road, SW17

£1,850 PCM

A two double bedroom ground floor conversion on a popular residential road in great condition throughout and a large private garden.

- Ground Floor Conversion
- Open Plan Living Space
- Two Double Bedrooms
- Private Rear Garden

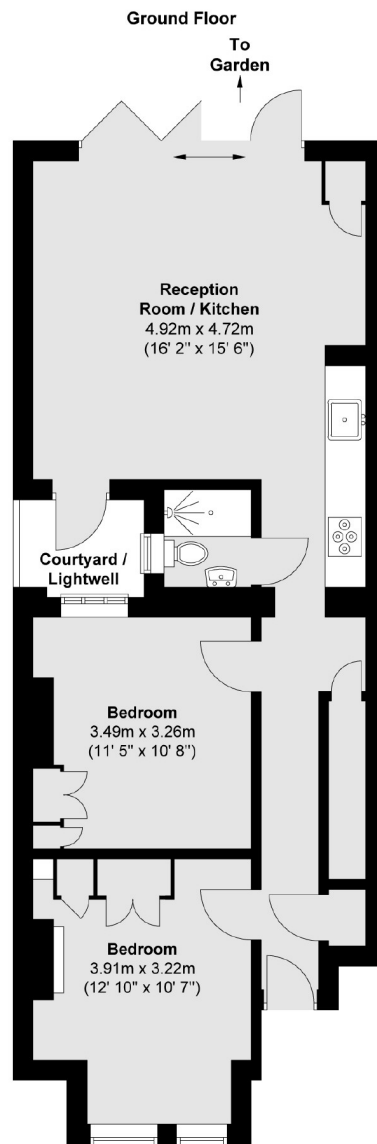
For further information on the costs associated with renting a property, please pop into our office or visit our website.



The property comprises; two double bedrooms with built in storage, well presented modern bathroom and a modern kitchen which is open plan to the reception area; offering a good entertaining space and bi fold doors onto the large private garden.

Rostella Road is ideally situated for Tooting Broadway Underground station and St Georges Hospital. The green open spaces of both Wandsworth Common and Tooting Bec Common are easily accessible as is the shops, bars and restaurants that both of these areas have to offer. In particular the buzzing Tooting Broadway Market, one of south London's oldest markets





Total area (approx.) : 63.1 sq. m (679 sq. ft)

Jacksons Earlsfield
372-374 Garratt Lane
Earlsfield
London
SW18 4ES
020 8971 7070

Energy Rating: We aim to make our particulars both accurate and reliable. However they are not guaranteed; nor do they form part of an offer or contract. If you require clarification on any points then please contact us, especially if you're traveling some distance to view. Please note that appliances and heating systems have not been tested and therefore no warranties can be given as to their good working order.