



TYNEMOUTH ROAD, CR4

£400,000

- Two Double Bedrooms
- Long Lease 900+ Years
- Chain Free
- Near Tooting Train Station
- Ground Floor Maisonette
- Private Garden





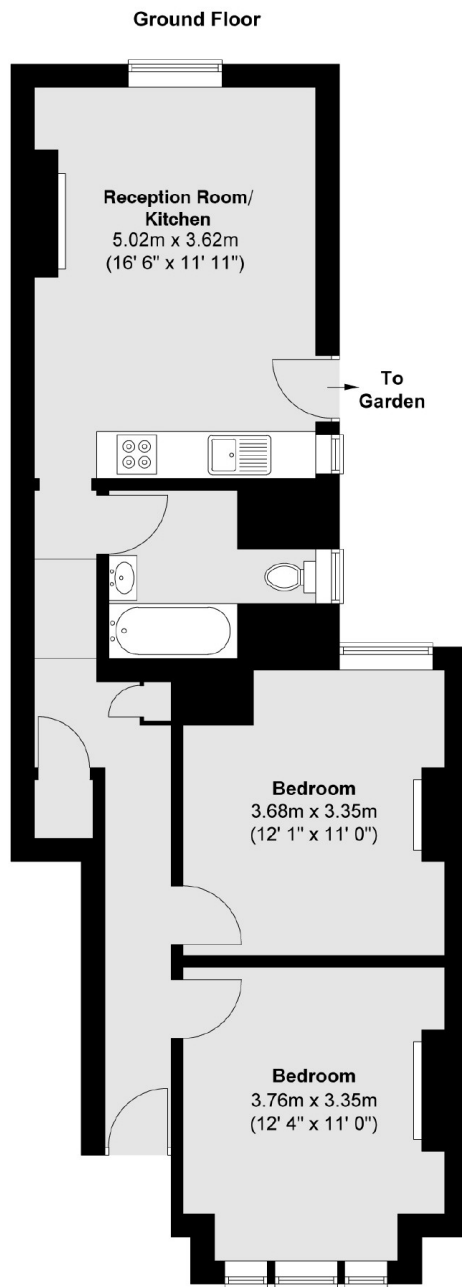
ABOUT THE HOME

A well presented two bedroom ground floor Victorian maisonette with direct access to a private garden, on a quiet residential near Tooting Junction rail station.

Tynemouth road is just minutes away from Figges Marsh and the Tooting Main Line rail station which takes you to central London in less than 30 minutes. Tooting Broadway station and all of the amenities on offer, including shops, bars and restaurants are just a short walk away.







Total area (approx.) : 58.8 sq. m (633 sq. ft)
Total storage area (approx.) : 0.6 sq. m (6 sq. ft)

JACKSONS TOOTING

3 Upper Tooting Road, London,
SW17 7TS
Sales: 020 8487 3175
Lettings: 020 8487 3176

Energy Rating: We aim to make our particulars both accurate and reliable. However they are not guaranteed; nor do they form part of an offer or contract. If you require clarification on any points then please contact us, especially if you're traveling some distance to view. Please note that appliances and heating systems have not been tested and therefore no warranties can be given as to their good working order.