



FRANCISCAN ROAD, SW17

£675,000

- Victorian Terrace House
- Two Double Bedrooms
- Double Reception Room
- No Onward Chain
- Potential To Extend STPP
- Large Family Garden





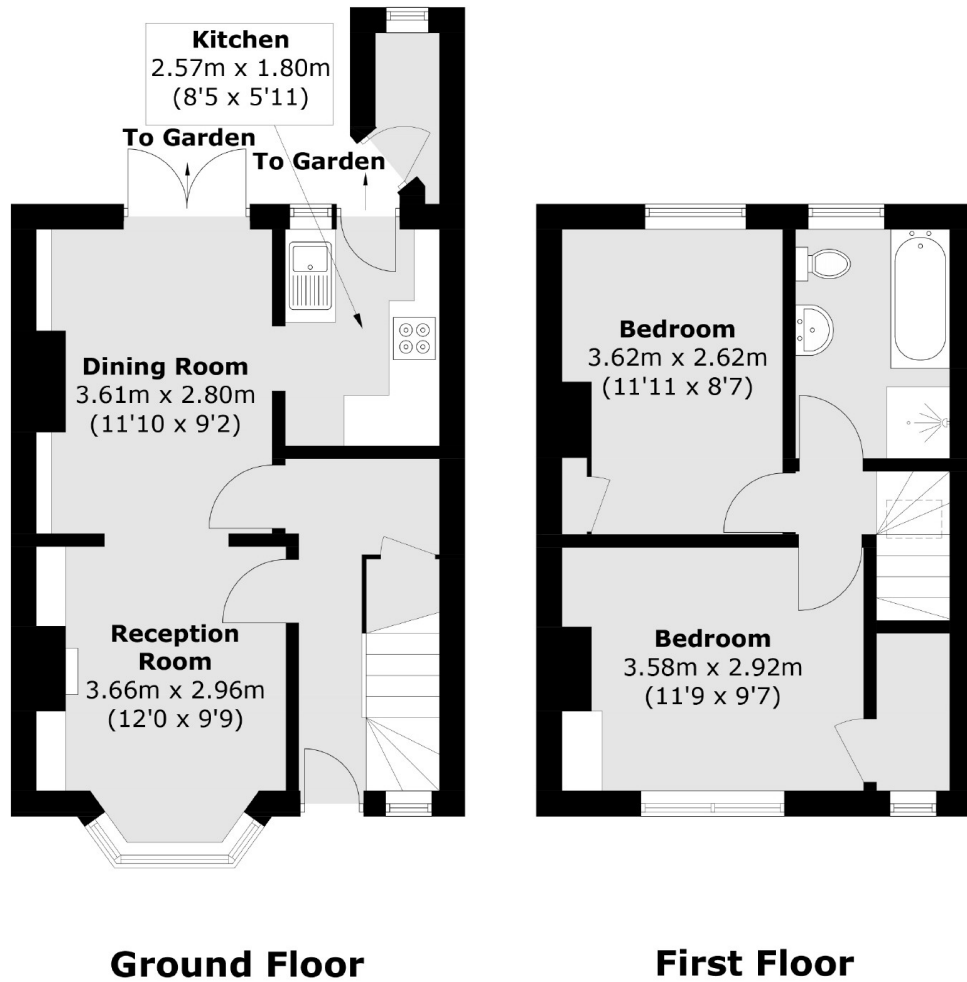
ABOUT THE HOME

A charming two double bedroom Victorian terrace house, located on one of Tootings popular spinal roads. Comprising a generous double reception with a well appointed separate kitchen. French doors lead out to a superb mature family garden. Returning inside to the first floor you will find two double bedrooms, a family bathroom and access to the loft space.

Franciscan Road runs between Tooting Bec Road and Mitcham Road and is an ideal location for easy access to Tooting Bec and Broadway Underground as well as the local shops and bars local to the area. There is also a vast array of restaurants, coffee shops and boutiques close by and the green open spaces of both Tooting Bec Common and Wandsworth Common are also easily accessible.







Total area (approx.): 63.8 sq. m (686.8 sq. ft)

JACKSONS TOOTING

3 Upper Tooting Road, London,
SW17 7TS
Sales: 020 8487 3175
Lettings: 020 8487 3176

Energy Rating: We aim to make our particulars both accurate and reliable. However they are not guaranteed; nor do they form part of an offer or contract. If you require clarification on any points then please contact us, especially if you're traveling some distance to view. Please note that appliances and heating systems have not been tested and therefore no warranties can be given as to their good working order.