



ESWYN ROAD, SW17

£1,000,000

- 4 Double bedrooms
- 2 Bathrooms
- Double Reception Room
- Kitchen / Diner
- Landscaped Garden
- Recently Renovated





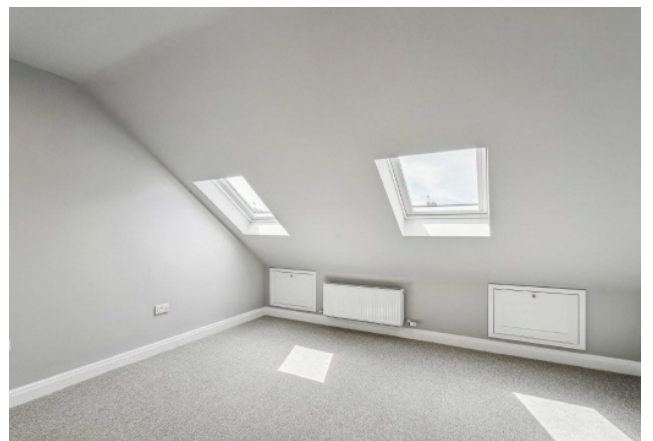
ABOUT THE HOME

A stunning 4 bedroom, 2 bathroom Victorian terrace house. Located on one of Tooting most sought after roads. Having recently been modernised throughout and sold with the added benefit of no onward chain.

Internally comprising; A spacious double reception room, ground floor WC and kitchen dining room with bi-folding doors leading out to a large landscaped garden.

Returning inside the property the first floor offers two generous double bedrooms and a family bathroom. The recently extended loft room boasts a further two double bedrooms and en-suite bathroom.

Well located for easy access to the Tooting Market, Tooting Broadway Tube, sought after primary schools as well as the open green spaces of Tooting Bec Common.







JACKSONS TOOTING

3 Upper Tooting Road, London,
SW17 7TS
Sales: 020 8487 3175
Lettings: 020 8487 3176

Energy Rating: We aim to make our particulars both accurate and reliable. However they are not guaranteed; nor do they form part of an offer or contract. If you require clarification on any points then please contact us, especially if you're traveling some distance to view. Please note that appliances and heating systems have not been tested and therefore no warranties can be given as to their good working order.