



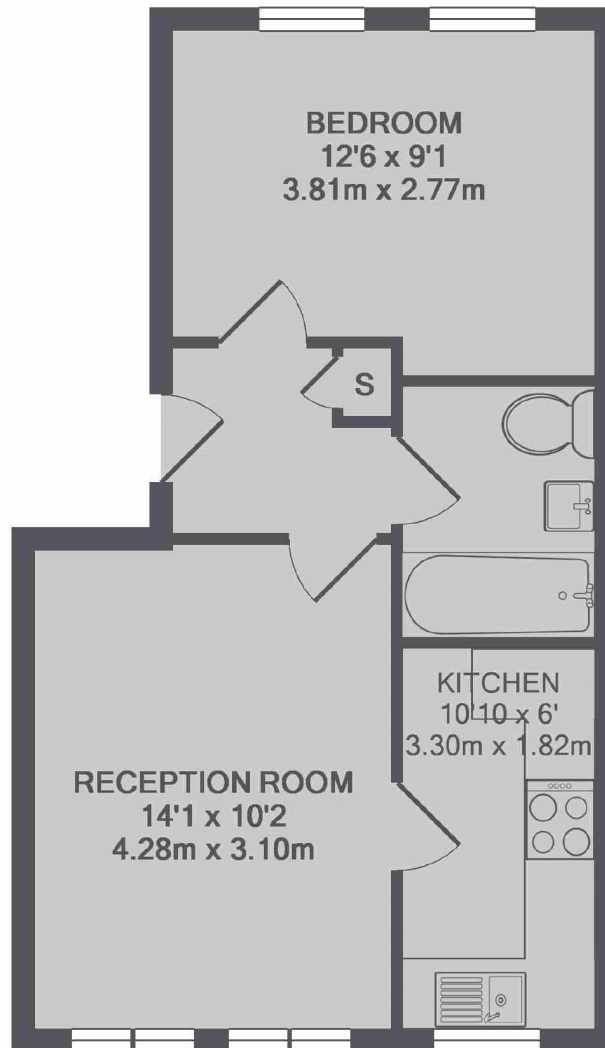
Molyneux Drive, SW17

£1,300 PCM

A recently refurbished modern one bedroom first floor flat located in the popular Heritage Park development. The property offers a large reception area, one double bedroom with fitted wardrobes, modern fitted kitchen and modern bathroom.

- One Bedroom Flat
- Separate Reception
- Modern Bathroom
- Off Street Parking
- Modern Kitchen
- Communal Gardens

For further information on the costs associated with renting a property, please pop into our office or visit our website.



TOTAL APPROX. FLOOR AREA 413 SQ.FT. (38.4 SQ.M.)

Jacksons Tooting
26 Tooting Bec Road
London
SW17 8BD
020 8767 0522
tooting.lettings@jacksonsestateagents.com

Energy Rating: C We aim to make our particulars both accurate and reliable. However they are not guaranteed; nor do they form part of an offer or contract. If you require clarification on any points then please contact us, especially if you're traveling some distance to view. Please note that appliances and heating systems have not been tested and therefore no warranties can be given as to their good working order.