



## OTTERBURN STREET, SW17

£700,000

- Victorian Split Level Maisonette
- Three Double Bedrooms
- Two Bathrooms
- Large Sitting Room
- Stylish Kitchen / Diner
- Private Rear Garden







## ABOUT THE HOME

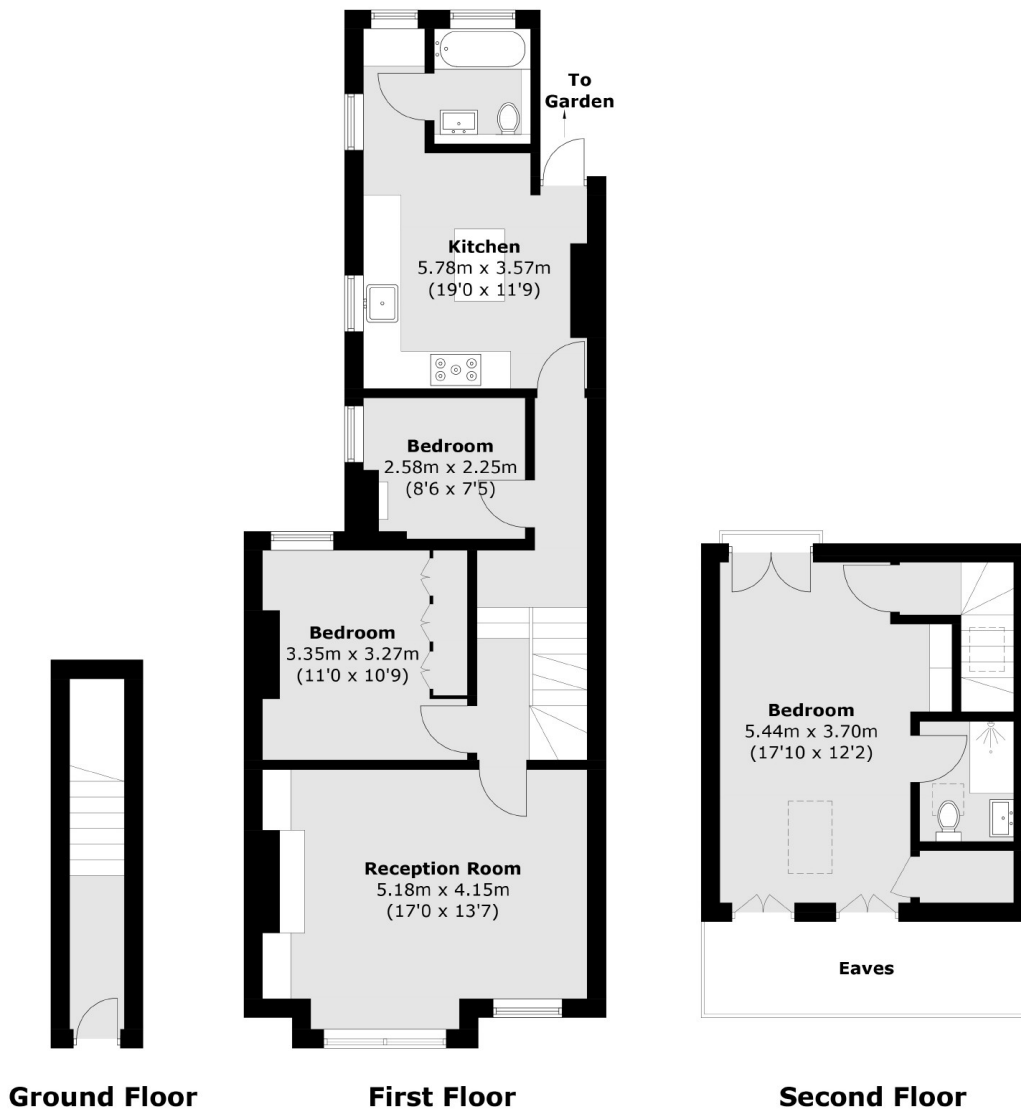
Offers in Excess Of £725,000 A stunning split level Victorian maisonette, laid across the first and second floor. Located on Otterburn Street and being within moments of Tooting rail station, Tooting Broadway tube and superb bus services.

The property comprises a spacious reception room, stylish kitchen / diner, family bathroom and there are 3 double bedrooms laid across the first and second floor, well appointed family bathroom and en-suite to the loft room. The property also benefits from easy access to south facing private rear garden visa the kitchen diner and is sold with the additional attractive benefit of no onward chain.









Total area (approx.): 96.7 sq. m (1040.9 sq. ft)  
(Excluding Eaves)

### JACKSONS TOOTING

3 Upper Tooting Road, London,  
SW17 7TS  
Sales: 020 8487 3175  
Lettings: 020 8487 3176

Energy Rating: We aim to make our particulars both accurate and reliable. However they are not guaranteed; nor do they form part of an offer or contract. If you require clarification on any points then please contact us, especially if you're traveling some distance to view. Please note that appliances and heating systems have not been tested and therefore no warranties can be given as to their good working order.