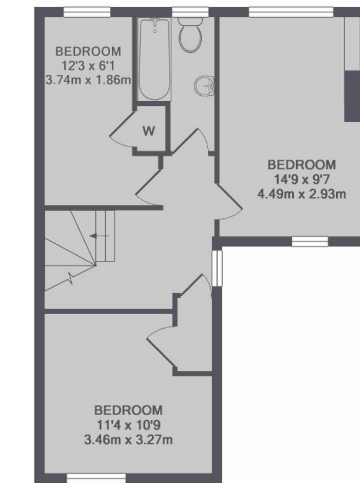




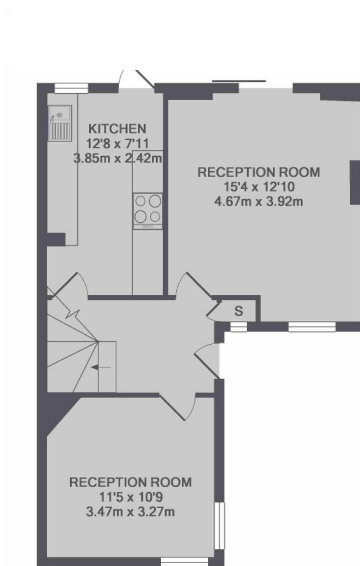
## Topsham Road, SW17

£750,000

This well presented and maintained Freehold house is located in Tooting Bec within a short walk to the Tooting High street, offering a large South facing garden and private off street parking. Laid out over two floors, the ground floor comprises of; two reception rooms, an open and bright hallway with plenty of storage and a large kitchen which in turn leads onto a South facing garden. The first floor comprises of three bedrooms and a newly fitted bathroom suite. Topsham Road is a popular Tooting Bec location close to both Tooting Bec underground station and Tooting Bec Common. The Broadway with its many excellent restaurants and shops is also nearby.



1ST FLOOR



GROUND FLOOR

TOTAL APPROX. FLOOR AREA 972 SQ.FT. (90.3 SQ.M.)

Jacksons Tooting  
26 Tooting Bec Road  
London  
SW17 8BD  
020 8767 0522  
tooting.sales@jacksonsestateagents.com

Energy Rating: D We aim to make our particulars both accurate and reliable. However they are not guaranteed; nor do they form part of an offer or contract. If you require clarification on any points then please contact us, especially if you're traveling some distance to view. Please note that appliances and heating systems have not been tested and therefore no warranties can be given as to their good working order.