



## Longley Road, SW17

£3,700 PCM

A stunning four double bedroom, double fronted Victorian house with large roof terrace and good sized study. The property also benefits from newly fitted contemporary kitchen and bathroom.

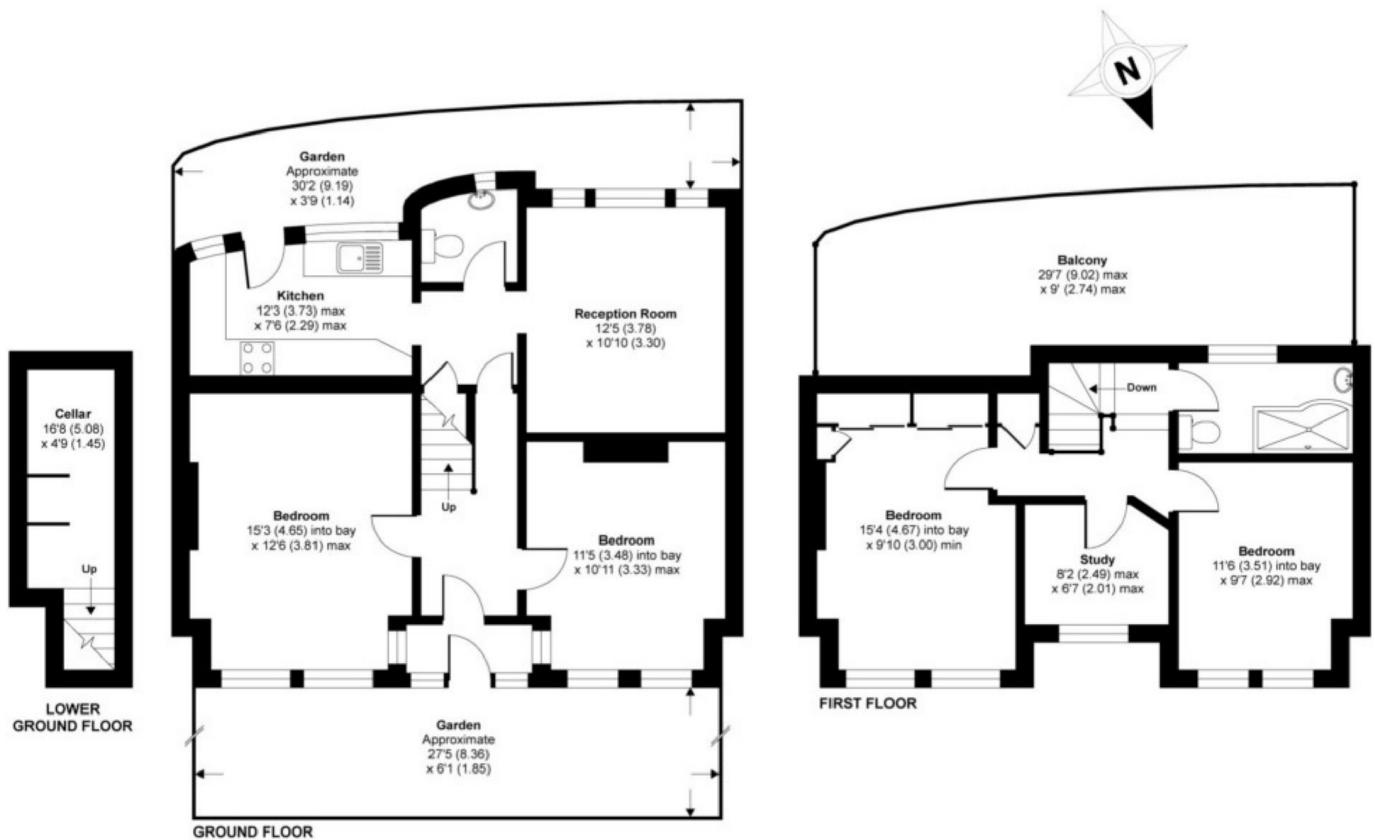
- Double Fronted Victorian House
- Four Double Bedrooms
- Newly Fitted Kitchen
- Newly Refurnished Bathroom
- Additional Study
- Private Roof Terrace

For further information on the costs associated with renting a property, please pop into our office or visit our website.



Longley Road is ideally located between Tooting Broadway and Tooting Rail stations and is also within close proximity of the many bars, shops and restaurants Tooting has to offer.





APPROX. GROSS INTERNAL FLOOR AREA 1254 SQ FT 116.5 SQ METRES

Longley Road, London, SW17

Copyright nichecom.co.uk 2017 Produced for Jacksons the Independent Estate Agents REF : 226536

Jacksons Tooting  
26 Tooting Bec Road  
London  
SW17 8BD  
020 8767 0522  
tooting.lettings@jacksonsestateagents.com

Energy Rating: E We aim to make our particulars both accurate and reliable. However they are not guaranteed; nor do they form part of an offer or contract. If you require clarification on any points then please contact us, especially if you're traveling some distance to view. Please note that appliances and heating systems have not been tested and therefore no warranties can be given as to their good working order.