



Macmillan Way, SW17

£1,950 PCM

A two bedroom ground floor flat, with en-suite shower to master bedroom, large reception room with dining area and views over communal gardens.

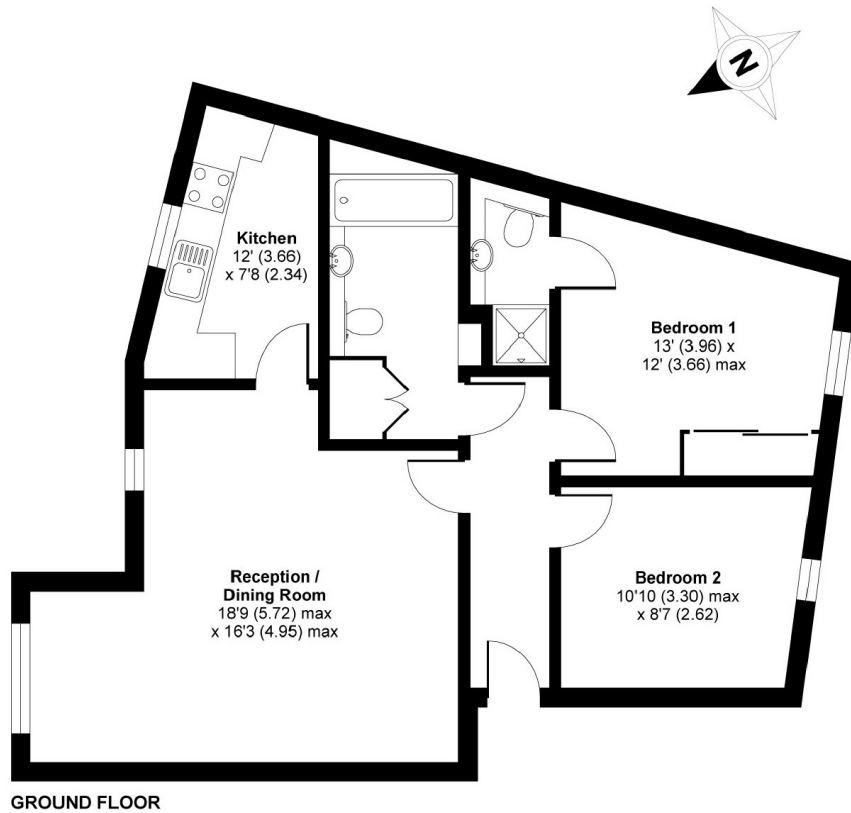
- Modern Apartment
- Large Reception Room
- Fitted Kitchen
- Two Double Bedrooms
- Modern Bathroom
- Off Street Parking

For further information on the costs associated with renting a property, please pop into our office or visit our website.



The Heritage Park development also benefits from well kept communal areas, communal bike storage and an on site residential caretaker. Macmillan Way is close to the amenities of both Balham and Tooting Bec.





APPROX. GROSS INTERNAL FLOOR AREA 722 SQ FT 67 SQ METRES

Macmillan Way, London, SW17

Copyright nichecom.co.uk 2017 Produced for Jacksons the Independent Estate Agents REF : 219455

Jacksons Tooting
26 Tooting Bec Road
London
SW17 8BD
020 8767 0522
tooting.lettings@jacksonsestateagents.com

Energy Rating: C We aim to make our particulars both accurate and reliable. However they are not guaranteed; nor do they form part of an offer or contract. If you require clarification on any points then please contact us, especially if you're traveling some distance to view. Please note that appliances and heating systems have not been tested and therefore no warranties can be given as to their good working order.