



Stapleton Road, SW17

£2,200 PCM

A stunning recently refurbished first floor three double bedroom Victorian maisonette located within minutes of Tooting Bec station.

- Victorian Maisonette
- Three Double Bedrooms
- Separate Reception Room
- Private Garden
- Contemporary Kitchen
- Close To Station

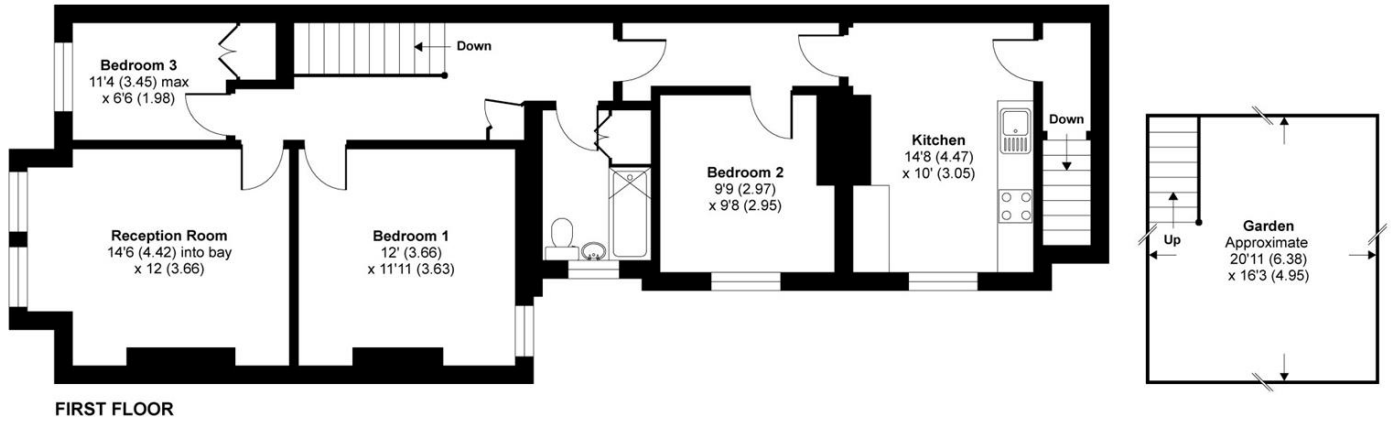
For further information on the costs associated with renting a property, please pop into our office or visit our website.



The property boasts bright reception room, three double bedrooms, beautiful contemporary kitchen with solid walnut worktops, modern bathroom suite and private rear garden.

Stapleton Road is located in the heart of Tooting Bec with access to Tooting Bec, Balham and Wandsworth Common stations and is also only minutes from Tooting Common.





APPROX. GROSS INTERNAL FLOOR AREA 904 SQ FT 83.9 SQ METRES

Stapleton Road, London, SW17

Copyright nichecom.co.uk 2016 Produced for Jacksons the Independent Estate Agents REF : 113814

Jacksons Tooting
26 Tooting Bec Road
London
SW17 8BD
020 8767 0522
tooting.lettings@jacksonsestateagents.com

Energy Rating: D We aim to make our particulars both accurate and reliable. However they are not guaranteed; nor do they form part of an offer or contract. If you require clarification on any points then please contact us, especially if you're traveling some distance to view. Please note that appliances and heating systems have not been tested and therefore no warranties can be given as to their good working order.