



Upper Tooting Road, SW17

£450,000

A spacious two double bedroom, two bathroom first floor modern development. Sold with a long lease and no onward chain.

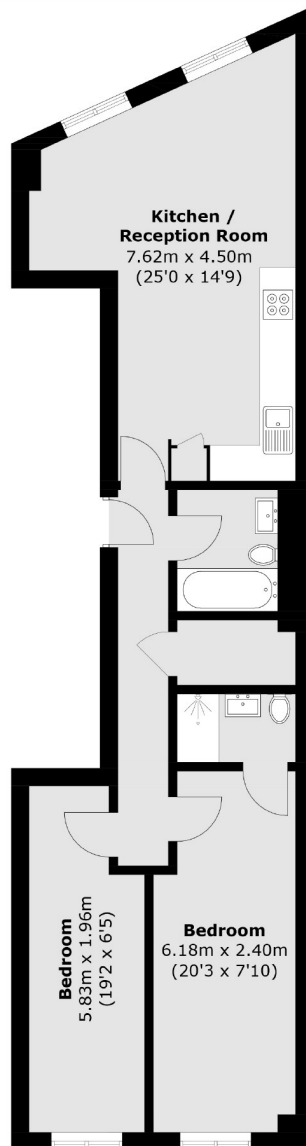
- Two Double Bedrooms
- Two Bathrooms
- Spacious Open Plan Lounge
- Modern Development
- Private Storage Area
- Long Leasehold



Internally the property offers in excess of 700sqft, comprising; A generous and well appointed open plan kitchen / lounge, family bathroom, two well proportioned doubled bedrooms with an en-suite to the larger of the two. The property is also accompanied with access to a private storage area at the rear of the building.

Upper Tooting Road is a very convenient location, nestled equidistant between Tooting Bec and Tooting Broadway tube stations. With a large array of bars, restaurants, gyms and shopping all on your doorstep.



**First Floor**

Total area (approx.): 65.9 sq. m (709.3 sq. ft)

Jacksons Tooting
26 Tooting Bec Road
London
SW17 8BD
020 8767 0522
tooting.sales@jacksonsestateagents.com

Energy Rating: We aim to make our particulars both accurate and reliable. However they are not guaranteed; nor do they form part of an offer or contract. If you require clarification on any points then please contact us, especially if you're traveling some distance to view. Please note that appliances and heating systems have not been tested and therefore no warranties can be given as to their good working order.