



## Derinton Road, SW17

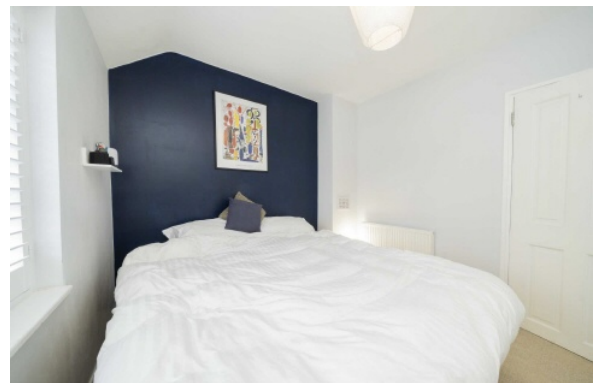
£500,000

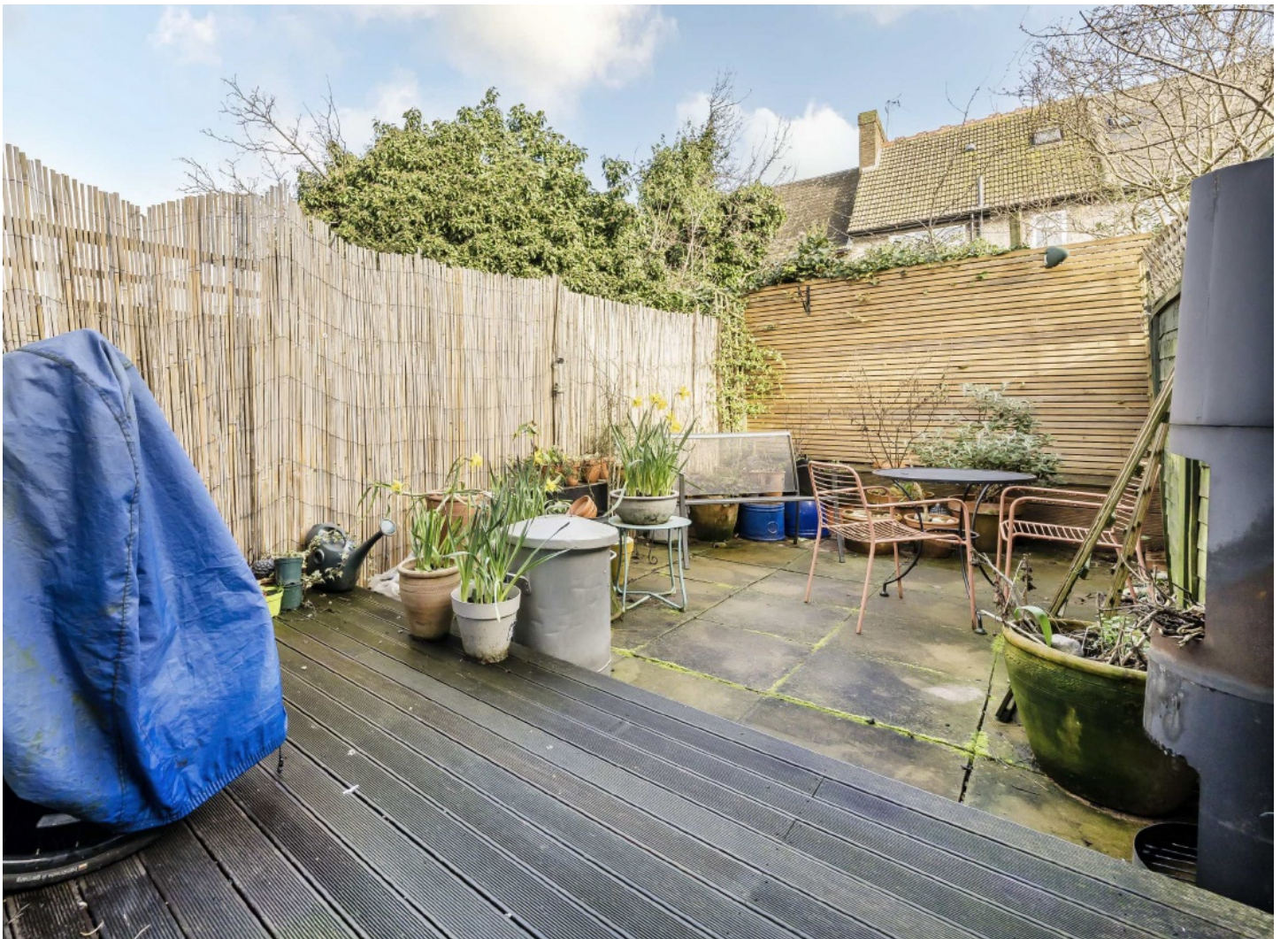
An immaculately presented two bedroom house with a private garden benefitting from being located on a popular residential road near Tooting Bec Station and the Common.

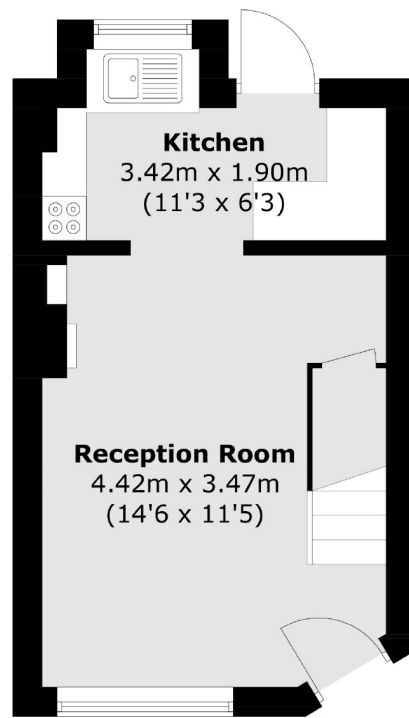
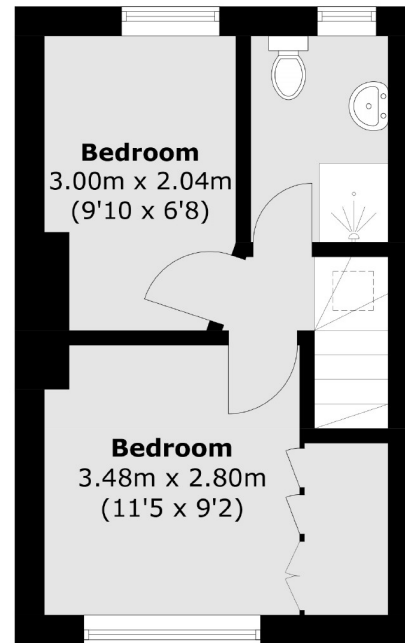
- Two Bedroom
- Freehold House
- Great Location
- Immaculate Condition



Derinton Road is an ideal location for easy access to Tooting Bec and Broadway Underground as well as the shops and bars local to the area. There is also a vast array of restaurants, coffee shops and boutiques close by and the green open spaces of both Tooting Bec Common and Wandsworth Common are easily accessible.





**Ground Floor****First Floor**

Total area (approx.): 41.9 sq. m (451.0 sq. ft)

Jacksons Tooting  
26 Tooting Bec Road  
London  
SW17 8BD  
020 8767 0522  
tooting.sales@jacksonsestateagents.com

Energy Rating: We aim to make our particulars both accurate and reliable. However they are not guaranteed; nor do they form part of an offer or contract. If you require clarification on any points then please contact us, especially if you're traveling some distance to view. Please note that appliances and heating systems have not been tested and therefore no warranties can be given as to their good working order.