



Fircroft Road, SW17

£1,250,000

A charming four double bedroom, two bathroom Victorian terrace that is beautifully presented harmonious balance of period charm and modern features.

- Four Bedrooms
- Two Bathrooms
- Potential To Extend (STPP)
- Fantastic Condition
- Desirable Location
- Good School Catchment

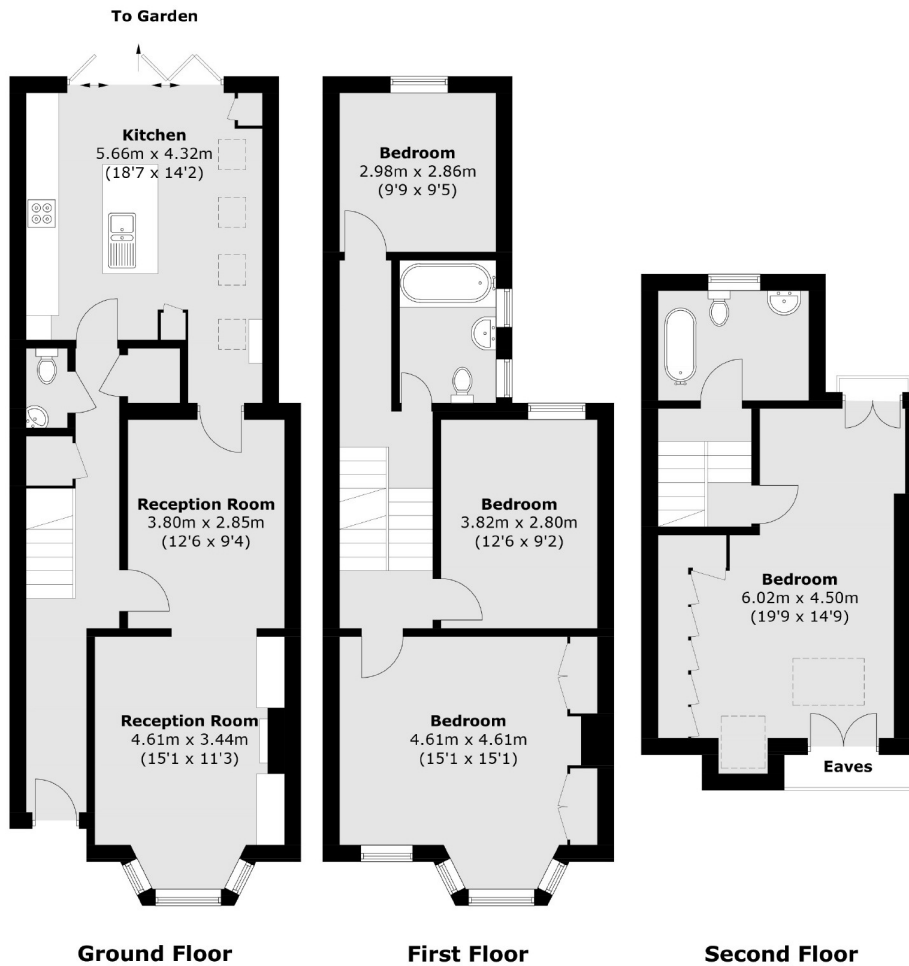


Internally the property offers a generous 1632sqft, comprising: A generous lounge / reception, ground floor W/C and finally a fully extended kitchen/dining room with island and full bi-folding doors leading out onto a landscaped garden. The first floor proudly offers three spacious double bedrooms, large family bathroom and stairs leading to the extended loft room with a further large double bedroom and a separate bathroom. There is further scope to extend to the rear of the kitchen and to the rear of the top floor bathroom subject to planning permission.

Fircroft Road runs between Glenburnie Road and Upper Tooting Road and is one of the most popular roads in Tooting. The property is ideally situated for Wandsworth Common mainline station and Tooting Bec Underground station. The green open spaces of both Wandsworth Common and Tooting Bec Common are easily accessible as are the shops, bars and restaurants that both of these areas have to offer.







Total area (approx.): 151.7 sq. m (1,632.9 sq. ft)
(Excluding Eaves)

Jacksons Tooting
26 Tooting Bec Road
London
SW17 8BD
020 8767 0522
tooting.sales@jacksonsestateagents.com

Energy Rating: We aim to make our particulars both accurate and reliable. However they are not guaranteed; nor do they form part of an offer or contract. If you require clarification on any points then please contact us, especially if you're traveling some distance to view. Please note that appliances and heating systems have not been tested and therefore no warranties can be given as to their good working order.