



## Franciscan Road, SW17

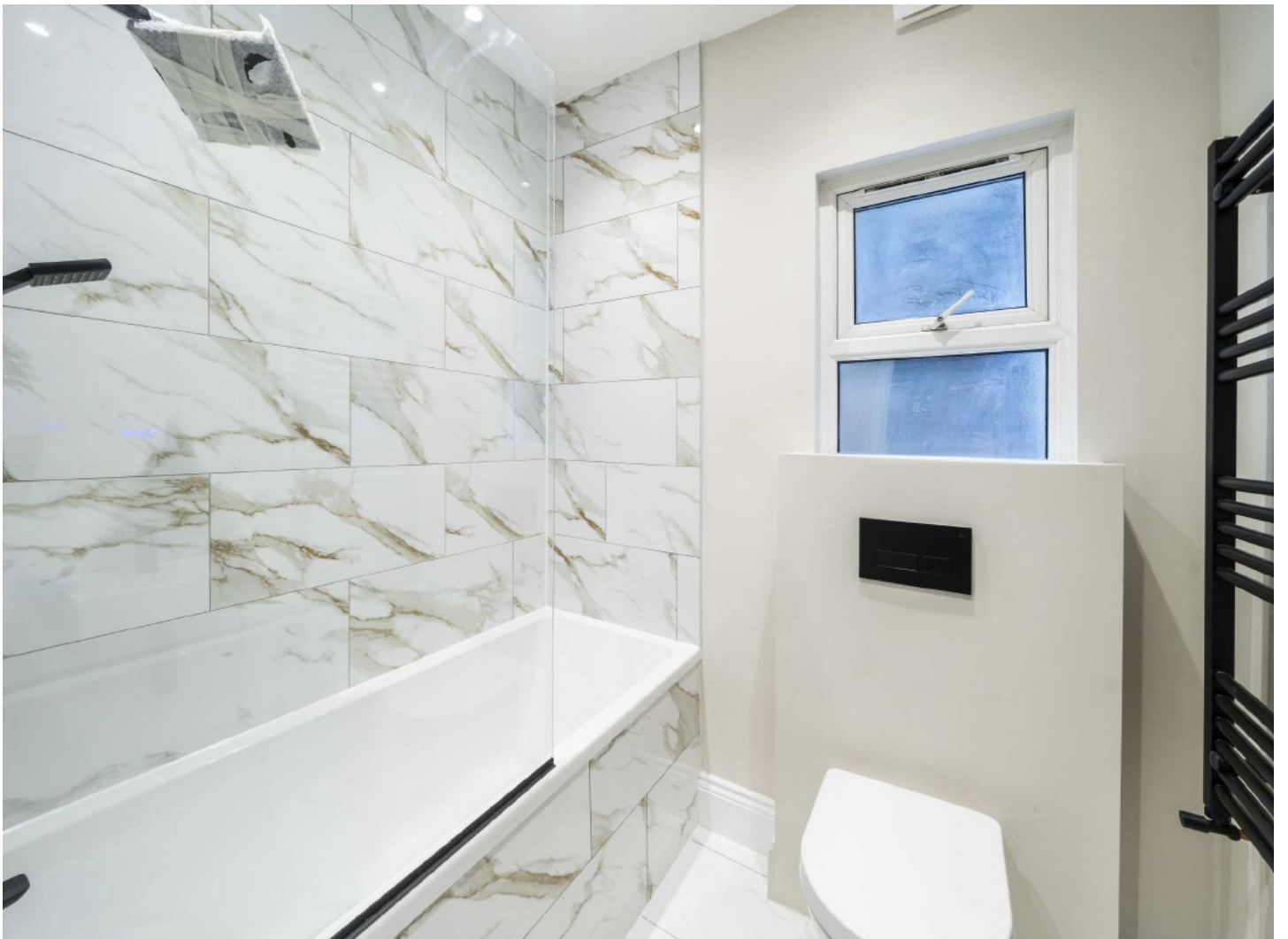
£650,000

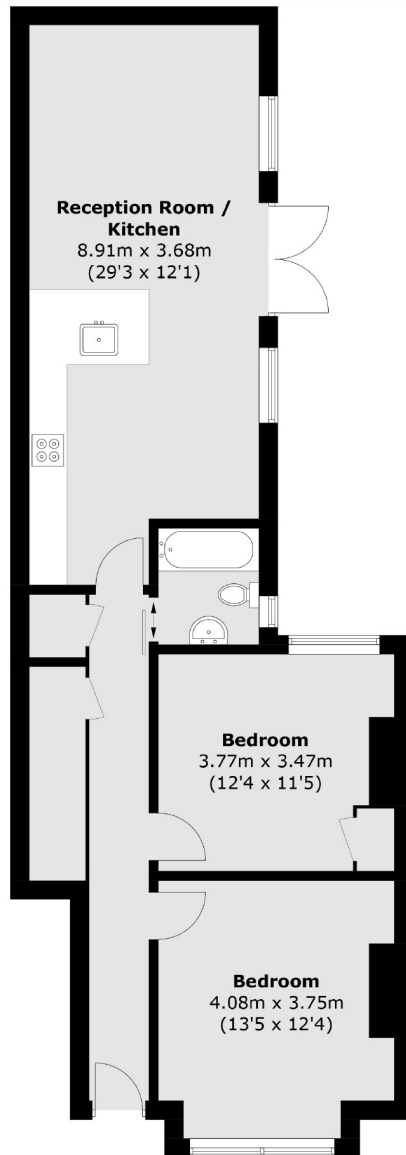
A ground floor two double bedrooms, two bathroom Victorian maisonette on a highly sought after residential road in Tooting Bec. The property offers great living space. After being fully refurbished throughout, the property benefits

- 2 Double Bedrooms
- South Facing Garden
- Great Location
- Sold Chain Free
- Newly Refurbished Throughout
- Near Tooting Common



Franciscan Road is one of the most sought after locations in Tooting. The property is ideally situated for Tooting Bec Underground station. The green open spaces of both Tooting Bec Common and Wandsworth Common are easily accessible as are the shops, bars and restaurants that both of these areas have to offer.





Total area (approx.): 76.2 sq. m (820.2 sq. ft)

Jacksons Tooting  
26 Tooting Bec Road  
London  
SW17 8BD  
020 8767 0522  
[tooting.sales@jacksonsstateagents.com](mailto:tooting.sales@jacksonsstateagents.com)

Energy Rating: We aim to make our particulars both accurate and reliable. However they are not guaranteed; nor do they form part of an offer or contract. If you require clarification on any points then please contact us, especially if you're traveling some distance to view. Please note that appliances and heating systems have not been tested and therefore no warranties can be given as to their good working order.