



PEVENSEY ROAD, SW17

£450,000

- Victorian Conversion Flat
- Two Bedrooms
- Spacious Reception
- Kitchen/Diner
- Modern Bathroom
- Long Leasehold





ABOUT THE HOME

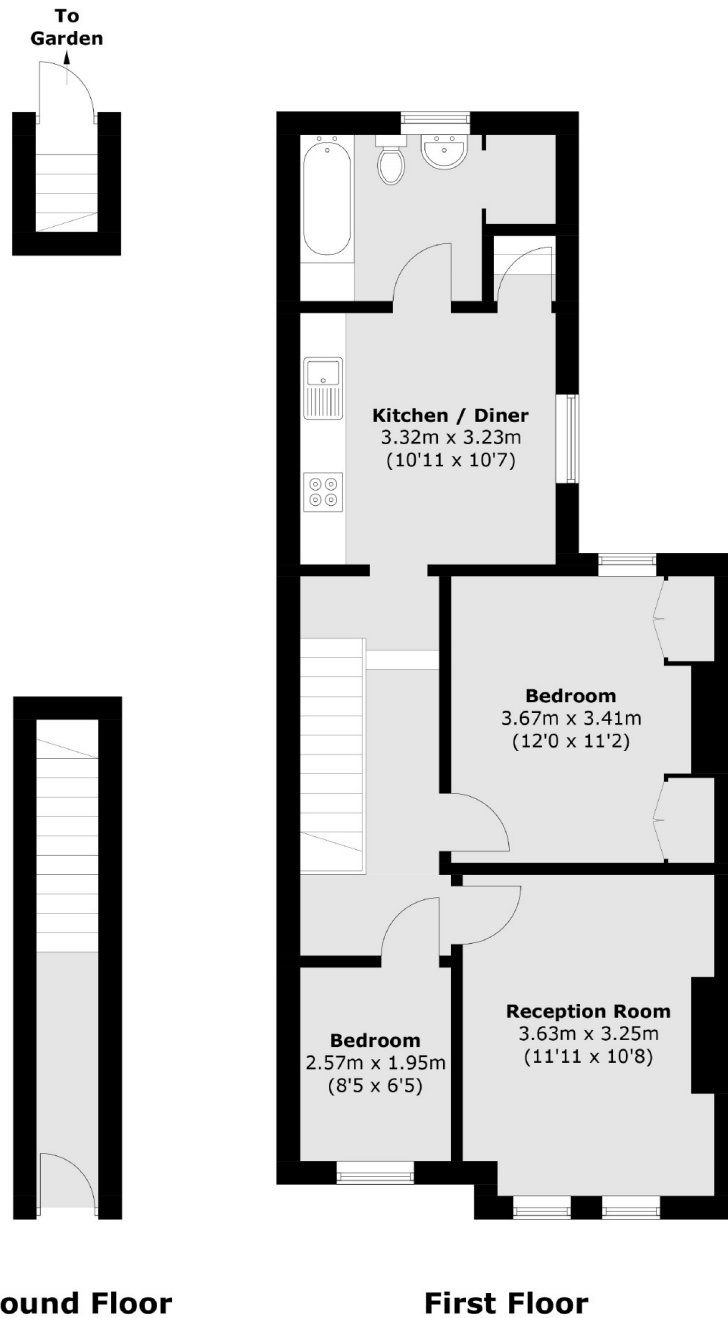
A charming 2 bedroom first floor Victorian conversion flat, with gardens at rear and located on one of Tooting Broadway's popular roads. Sold with no onward chain.

Internally amassing in excess of 700sqft. Comprising; A generous reception room 2 spacious bedrooms, modern bathroom and finally a well proportioned kitchen / diner with access directly to a generous garden.

This property is well situated for easy access to an array of shops, bars and restaurants on offer. The wide open spaces of Tooting Bec Common are also close by, as are the excellent transport links including Tooting Station and Tooting Broadway Underground Station.







Total area (approx.): 110.5 sq. m (705.0 sq. ft)

JACKSONS TOOTING

3 Upper Tooting Road, London,
SW17 7TS
Sales: 020 8487 3175
Lettings: 020 8487 3176

Energy Rating: We aim to make our particulars both accurate and reliable. However they are not guaranteed; nor do they form part of an offer or contract. If you require clarification on any points then please contact us, especially if you're traveling some distance to view. Please note that appliances and heating systems have not been tested and therefore no warranties can be given as to their good working order.