



Pevensey Road, SW17

£500,000

A charming 2 bedroom first floor Victorian conversion flat, with gardens at rear and located on one of Tooting Broadways popular roads. Sold with no onward chain.

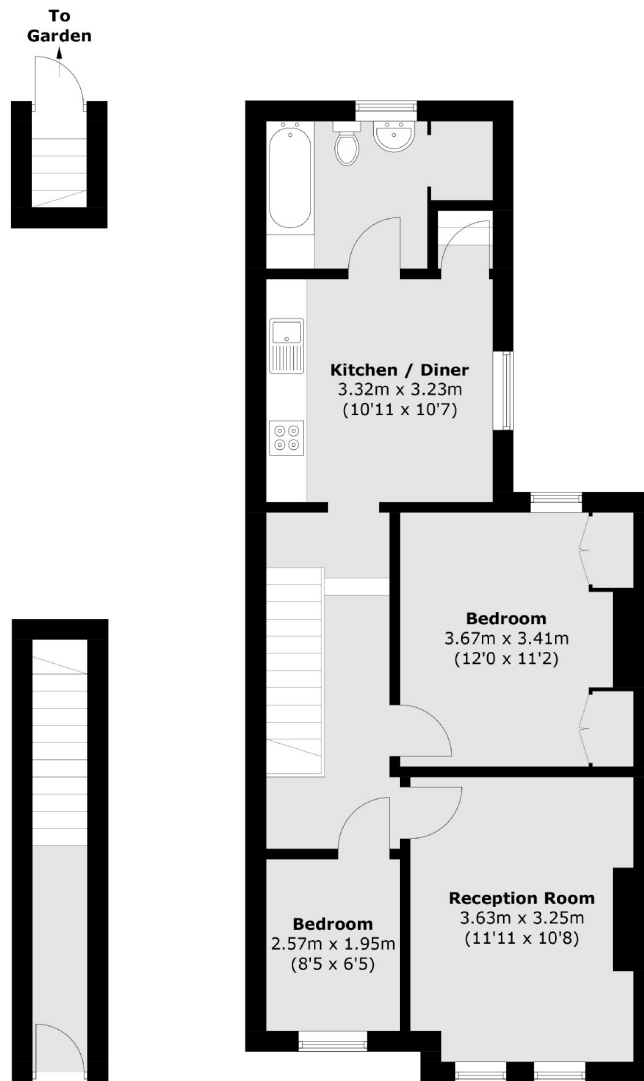
- Victorian Conversion Flat
- Two Bedrooms
- Spacious Reception
- Kitchen/Diner
- Modern Bathroom
- Long Leasehold



Internally amassing in excess of 700sqft. Comprising; A generous reception room 2 spacious bedrooms, modern bathroom and finally a well proportioned kitchen / diner with access directly to a generous garden.

This property is well situated for easy access to an array of shops, bars and restaurants on offer. The wide open spaces of Tooting Bec Common are also close by, as are the excellent transport links including Tooting Station and Tooting Broadway Underground Station.



**Ground Floor****First Floor**

Total area (approx.): 110.5 sq. m (705.0 sq. ft)

Jacksons Tooting
26 Tooting Bec Road
London
SW17 8BD
020 8767 0522
tooting.sales@jacksonsestateagents.com

Energy Rating: We aim to make our particulars both accurate and reliable. However they are not guaranteed; nor do they form part of an offer or contract. If you require clarification on any points then please contact us, especially if you're traveling some distance to view. Please note that appliances and heating systems have not been tested and therefore no warranties can be given as to their good working order.