



Streatham Road, CR4

£450,000

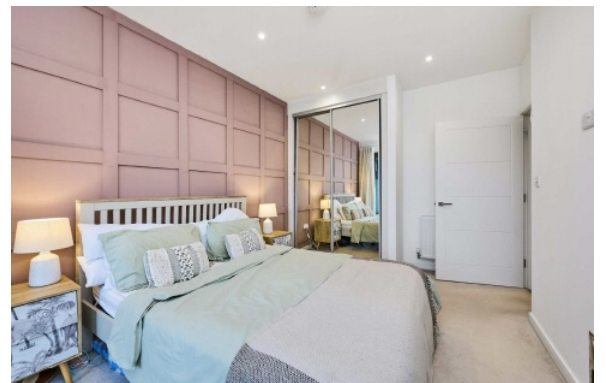
Arguably one of the most sought after plots within this stunning modern development. Benefitting from direct access to both front and rear balconies, direct access out to well tended communal gardens and a

- Stylish Modern Development
- 2 Double Bedrooms
- Open Plan Lounge
- Secure Underground Parking
- 2 x Balconies & Gardens
- Beautifully Presented

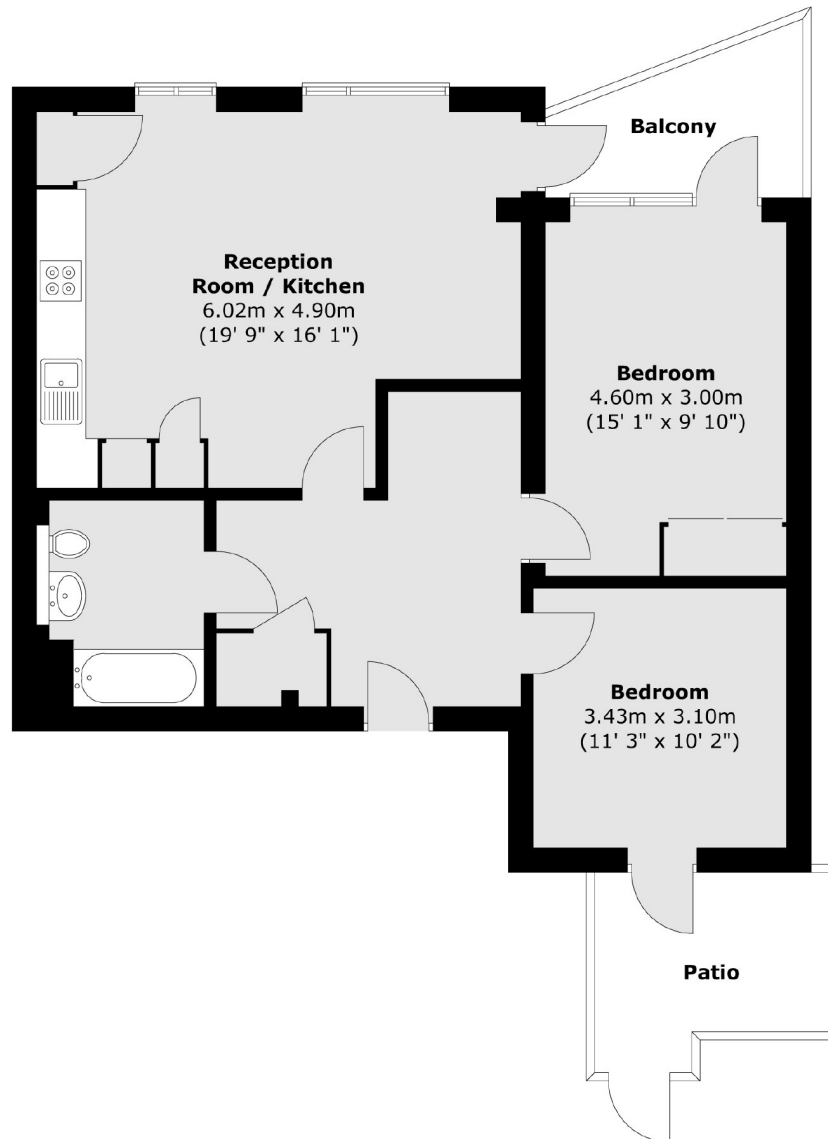


Internally the property is very stylishly presented throughout by the current owner occupiers. Amassing an impressive 769sqft and comprises; Generous open plan kitchen / sitting room, principal double bedroom with fitted wardrobes and french doors leading to a balcony. A very generous second bedroom and finally full tiled family bathroom.

Imperial Court is located within a mile of both Streatham Common and Tooting stations, with bus routes on your doorstep. The development offers great options whether you work locally or in town







Total area (approx.) : 71.5 sq. m (769 sq. ft)
Total balcony area (approx.) : 5.1 sq. m (55 sq. ft)
Total Patio area (approx.) : 6.4 sq. m (69 sq. ft)

Jacksons Tooting
26 Tooting Bec Road
London
SW17 8BD
020 8767 0522
tooting.sales@jacksonsestateagents.com

Energy Rating: We aim to make our particulars both accurate and reliable. However they are not guaranteed; nor do they form part of an offer or contract. If you require clarification on any points then please contact us, especially if you're traveling some distance to view. Please note that appliances and heating systems have not been tested and therefore no warranties can be given as to their good working order.