



GLASFORD STREET, SW17

£775,000

- Split Level Victorian Maisonette
- Contemporary Styling
- Large Kitchen/Diner
- 3 Spacious Bedrooms
- 2 Stylish Bathrooms
- Garden + Roof Terrace





ABOUT THE HOME

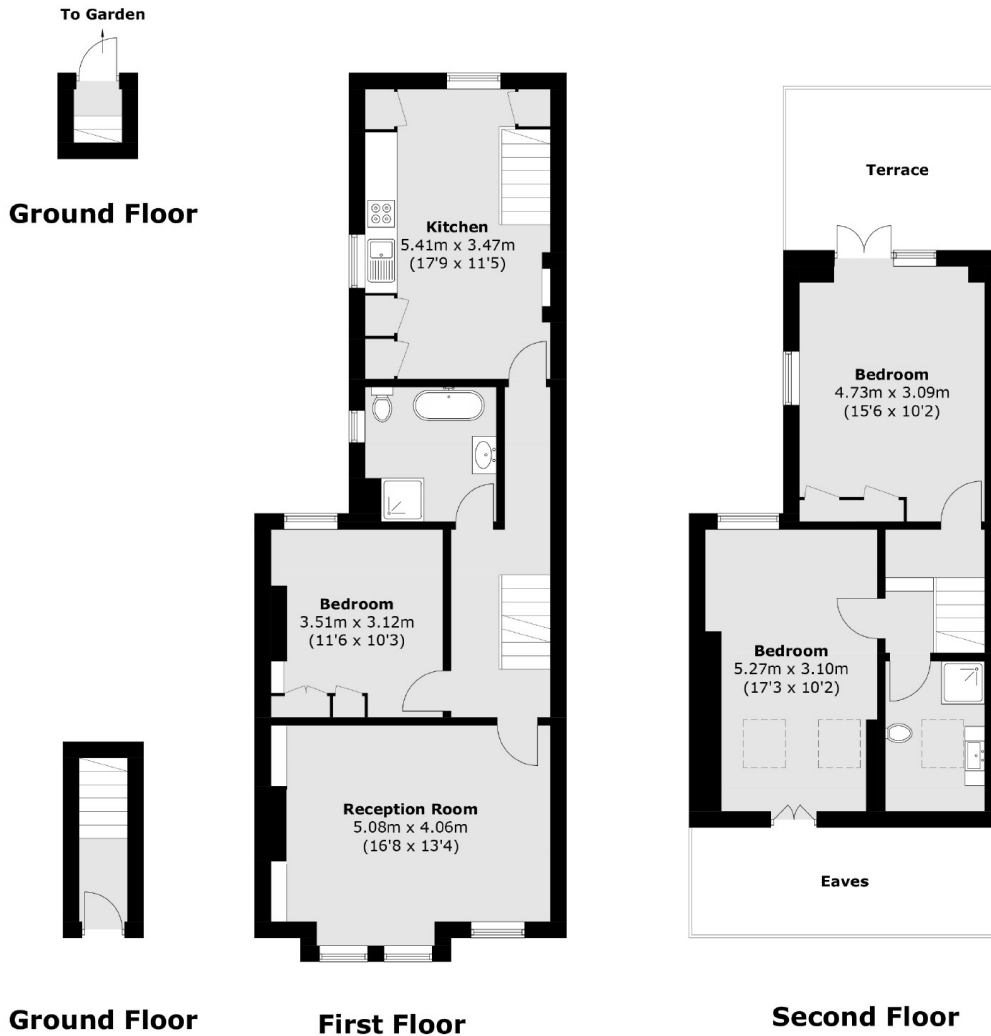
A gorgeous 3 double bedroom, 2 bathroom Victorian maisonette that is sold with direct access to both a private garden, roof terrace and a share of freehold.

Internally the property boasts a spacious 1232 Sqft, comprising; A large sitting room with separate eat in kitchen / dining room. Providing direct access to the private south facing garden. A stylish 4 piece family bathroom, double bedroom with fitted wardrobes and stairs leading to the fully extended loft room. Which provides 2 spacious double bedrooms and a wonderful south facing terrace.

Glasford Street is a quiet residential road with great transport links including Tooting Rail and Tooting Broadway Underground station which are within a ten minute walk. Tooting Market, with it's fantastic eating, drinking and shopping options, is nearby, as is Tooting Bec Common.







Total area (approx.): 114.5 sq. m (1232.3 sq. ft)
 Terrace area : 11.8 sq. m (127.0 sq. ft)
 (Excluding Eaves)

JACKSONS TOOTING

3 Upper Tooting Road, London,
 SW17 7TS
 Sales: 020 8487 3175
 Lettings: 020 8487 3176

Energy Rating: We aim to make our particulars both accurate and reliable. However they are not guaranteed; nor do they form part of an offer or contract. If you require clarification on any points then please contact us, especially if you're traveling some distance to view. Please note that appliances and heating systems have not been tested and therefore no warranties can be given as to their good working order.