



## Mitcham Road, SW17

£375,000

A charming 1 double bedroom modern apartment located in Hurley Court, conveniently positioned on Amen Corner. Located on the second floor and with secure residents parking.

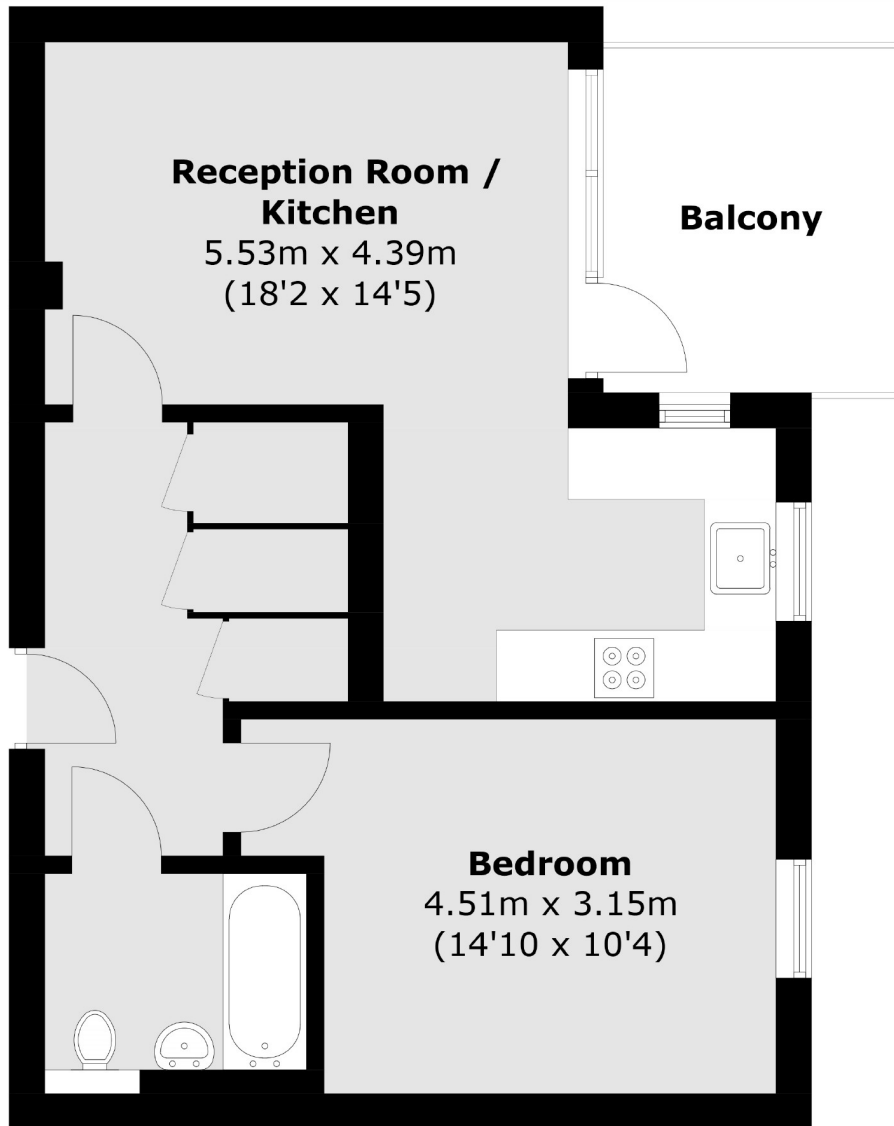
- Modern Development
- Secure Parking
- 1 Double Bedroom
- Large Open Plan Lounge
- Private Balcony
- Sought After Location



Internally the property comprises a generous open plan lounge / dining room leading into a well pointed but removed kitchen. Providing an excellent social space with direct access onto a private balcony. There is a spacious double bedroom and finally ample integrated cupboard / storage space.

Close to the amenities and high street shopping of Tooting Broadway which include, Cafes, supermarkets, restaurants, the Broadway market and is a short walk to Tooting Broadway underground station.





Total area (approx.): 49.2 sq. m (529.5 sq. ft)  
Balcony: 7.2 sq. m (77.5 sq. ft)

Jacksons Tooting  
26 Tooting Bec Road  
London  
SW17 8BD  
020 8767 0522  
[tooting.sales@jacksonsestateagents.com](mailto:tooting.sales@jacksonsestateagents.com)

Energy Rating: We aim to make our particulars both accurate and reliable. However they are not guaranteed; nor do they form part of an offer or contract. If you require clarification on any points then please contact us, especially if you're traveling some distance to view. Please note that appliances and heating systems have not been tested and therefore no warranties can be given as to their good working order.