



Tooting Bec Road, SW17

£675,000

** Offers in Excess of £675,000** Located within moments of both Tooting Bec tube and Tooting Bec Common. You will find this stunning two double bedroom ground floor Victorian garden maisonette that is

- Victorian Garden Maisonette
- Two Large Bedrooms
- Spacious Lounge
- Generous Kitchen / Diner
- Private Rear Garden
- Share Of Freehold

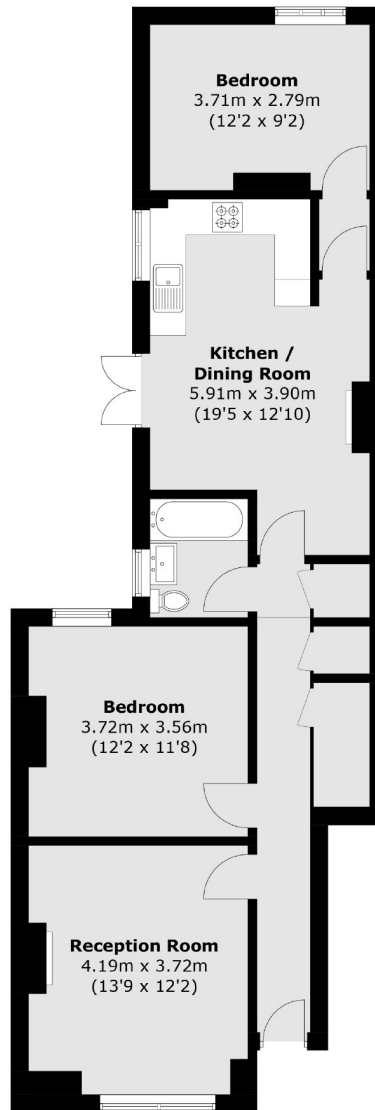


Sold with the added benefit of the share of freehold, the property is rich in period features and internally amassing 832 sqft, comprising; A generous lounge with original period fireplace, a modern kitchen / diner with french doors opening out to the private rear garden. There are two well proportioned double bedrooms and finally a stylish, fully tiled family bathroom.

Benefiting from the local amenities, shops, bars, cafés, restaurants that Tooting and Balham offer.







Ground Floor

Total area (approx.): 77.3 sq. m (832.0 sq. ft)

Jacksons Tooting
26 Tooting Bec Road
London
SW17 8BD
020 8767 0522
tooting.sales@jacksonsstateagents.com

Energy Rating: We aim to make our particulars both accurate and reliable. However they are not guaranteed; nor do they form part of an offer or contract. If you require clarification on any points then please contact us, especially if you're traveling some distance to view. Please note that appliances and heating systems have not been tested and therefore no warranties can be given as to their good working order.