



Foulser Road, SW17

£800,000

A three bedroom, double fronted, ground floor Victorian conversion finished to a spectacular standard throughout the property. This property further benefits from potential to extend out the back and a large private

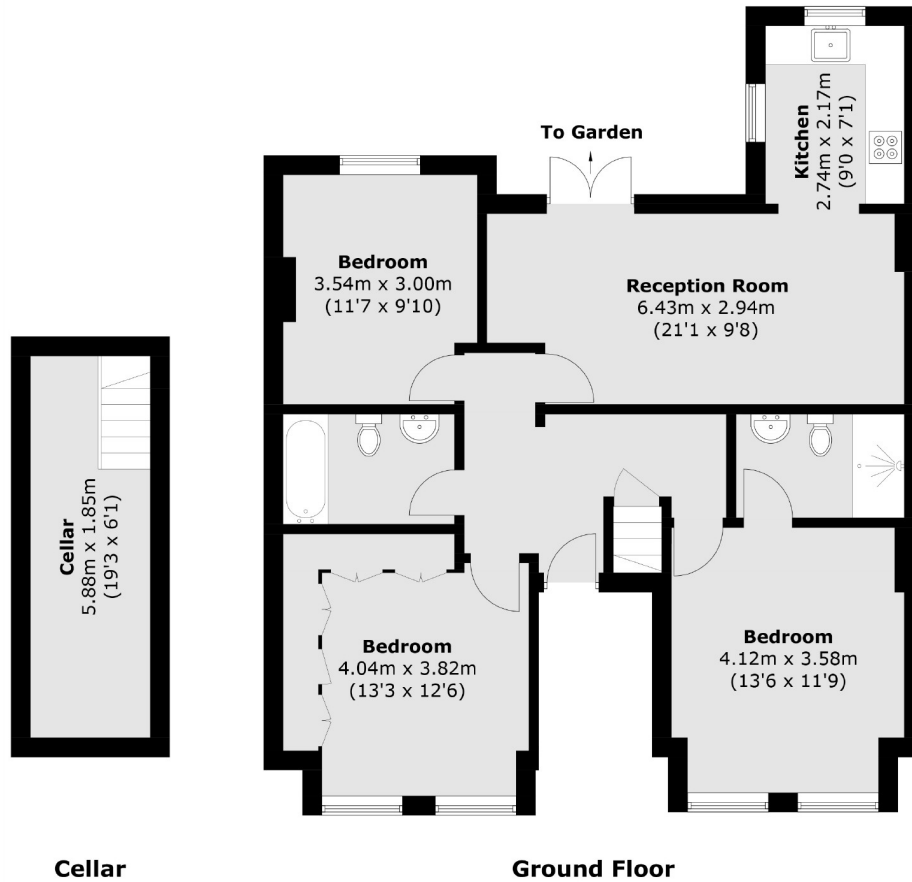
- Victorian Conversion
- Three Double Bedrooms
- Private Garden
- Potential To Extend
- Tooting Bec
- Ground Floor Flat



Foulser Road is in a prime Tooting Bec location close to Tooting Bec Underground station and Tooting Bec Common.







Total area (approx.): 96.8 sq. m (1041.9 sq. ft)

Jacksons Tooting
26 Tooting Bec Road
London
SW17 8BD
020 8767 0522
tooting.sales@jacksonsestateagents.com

Energy Rating: We aim to make our particulars both accurate and reliable. However they are not guaranteed; nor do they form part of an offer or contract. If you require clarification on any points then please contact us, especially if you're traveling some distance to view. Please note that appliances and heating systems have not been tested and therefore no warranties can be given as to their good working order.