



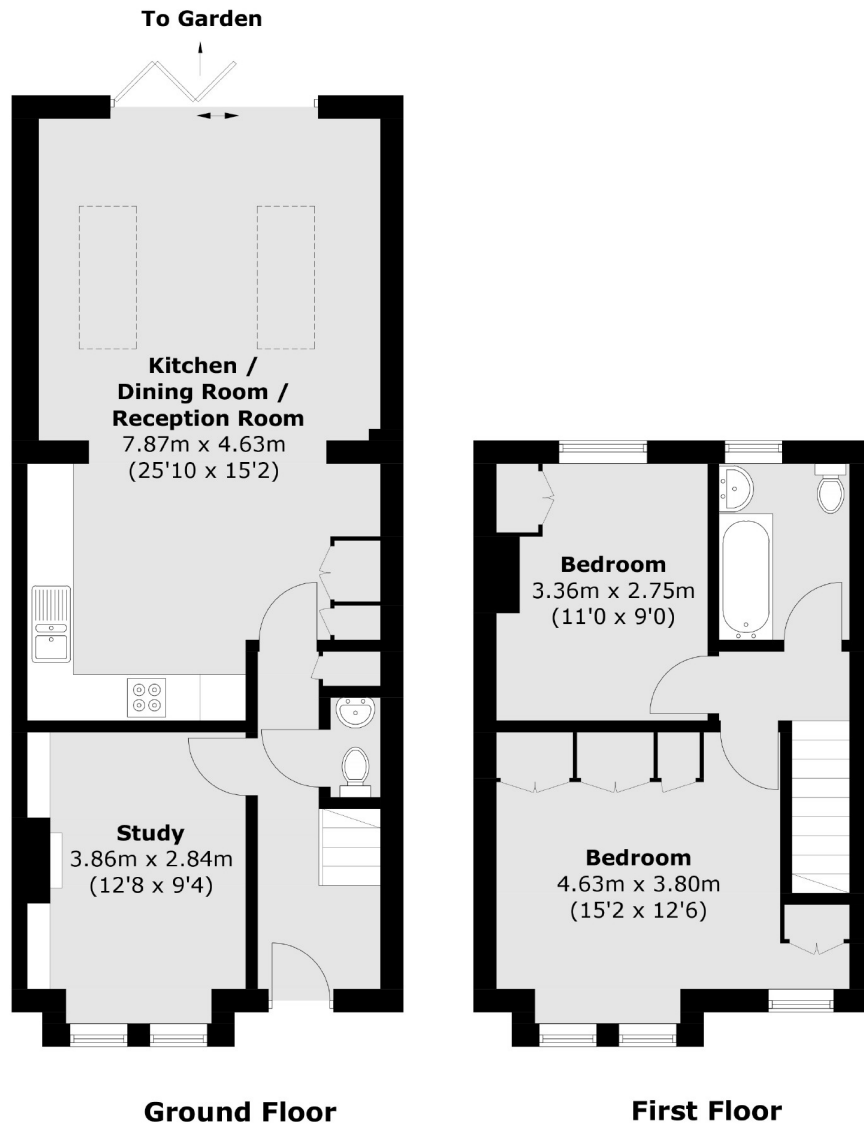
Bertal Road, SW17

£800,000

**** OFFERS IN EXCESS £800,000**** A truly stunning two bedroom mid terrace Victorian family home that has been fully extended at the rear and completely renovated to an exemplary standard by the current owners. The property also benefits from the potential to extend in to the loft, subject to planning permission.

Accommodation comprises: entrance hall with downstairs W/C, beautifully presented reception room, recently refitted kitchen open plan to the dining area and second reception room, offering a wonderful entertaining space with bi-folding doors opening onto a southerly facing rear garden. On the first floor there are two double bedrooms, the master bedroom benefiting from built-in wardrobes, and a modern family bathroom

- Victorian Terraced House
- Two Double Bedrooms
- Large Private Garden
- Newly Refurbished
- Downstairs W/C
- Potential To Extend STP



Total area (approx.): 85.4 sq. m (919.2 sq. ft)

Jacksons Tooting
26 Tooting Bec Road
London
SW17 8BD
020 8767 0522
tooting.sales@jacksonsestateagents.com

Energy Rating: D We aim to make our particulars both accurate and reliable. However they are not guaranteed; nor do they form part of an offer or contract. If you require clarification on any points then please contact us, especially if you're traveling some distance to view. Please note that appliances and heating systems have not been tested and therefore no warranties can be given as to their good working order.