



Church Lane, SW17

£3,000 PCM

A three double bedroom, two bathroom modern town house with large open plan kitchen / reception leading to a private rear garden.

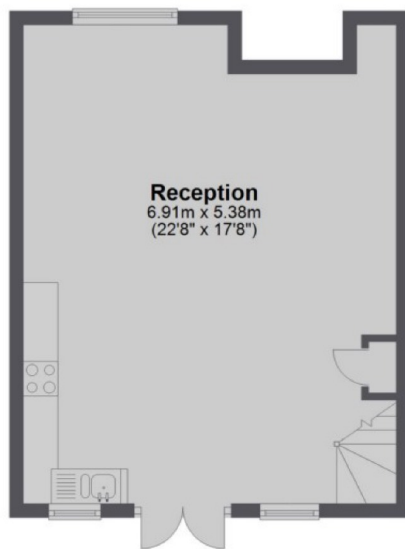
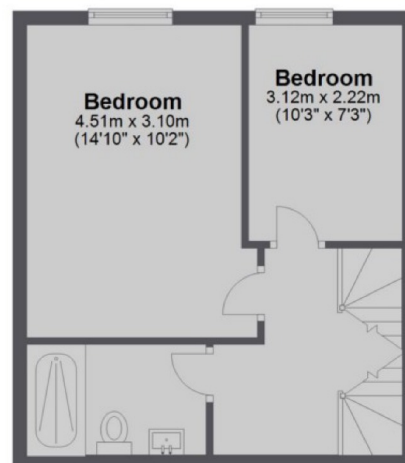
- Townhouse
- Open Plan Kitchen/Reception
- Three Bedrooms
- Two Bathrooms
- Garden
- Close To Station

For further information on the costs associated with renting a property, please pop into our office or visit our website.



Church Lane is ideally located within easy reach of both Tooting Broadway tube and Tooting mainline overground station. The amenities of Tooting are also within easy reach offering an abundance of bars, shops and restaurants.



First Floor**Ground Floor****Second Floor**

Total area: approx. 100.8 sq. metres (1085.0 sq. feet)

Jacksons Tooting
26 Tooting Bec Road
London
SW17 8BD
020 8767 0522
tooting.lettings@jacksonsestateagents.com

Energy Rating: C We aim to make our particulars both accurate and reliable. However they are not guaranteed; nor do they form part of an offer or contract. If you require clarification on any points then please contact us, especially if you're traveling some distance to view. Please note that appliances and heating systems have not been tested and therefore no warranties can be given as to their good working order.